



IMPERIAL
HARVEST

吴宸翔
大师

Secrets of Millionaire Home Feng Shui

THE IMPERIAL HARVEST GUIDE TO ACHIEVING
SUCCESS, WEALTH AND BREAKTHROUGH GROWTH
WITH IMPERIAL FENG SHUI PRINCIPLES

Contents

PART 01

INTRODUCTION TO HOME FENG SHUI

- 1.1 Five Auspicious External Landform Features
- 1.2 Debunking Common Myths of Classical Feng Shui

PART 02

IMPERIAL FENG SHUI APPLICATIONS OF THE SAN YUAN XUAN KONG FLYING STAR

- 2.1 Principles of San Yuan Xuan Kong Flying Star
- 2.2 How to plot the Natal Flying Star chart based on San Yuan Xuan Kong Flying Star principles

PART 03

SECTORS WITHIN A PROPERTY

- 3.1 The Five Important Sectors in every property
- 3.2 Missing Sectors
- 3.3 Implications of Missing Sectors from both Early Heaven and Later Heaven Ba Gua perspectives
- 3.4 How do we address the problem of Missing Sectors?
- 3.5 Imperial Harvest continues the heritage of Emperor Qian Long's Jadeite Mountains

PART 04

THE TWO TYPES OF WEALTH SECTORS AND HOW TO ACTIVATE THEM

- 4.1 Activating the Water Star (Wealth Star)
- 4.2 Three C's of Imperial Harvest-grade Crystals
- 4.3 The Imperial Harvest Crystal Collection
 - Laughing Buddha Series
 - Mythical Creatures Series
 - Celestial Deities Series
- 4.4 Imperial Harvest Exquisite Jadeite Paintings
 - The Celestial Deities Collection
 - The Mythical Creatures Collection
 - The Landscapes Collection

PART 05

THE AUTHORITY SECTOR AND HOW TO ACTIVATE IT

- 5.1 What is Sha Qi (煞气)?
- 5.2 Resolving the Sha Qi Problem
- 5.3 Imperial White Inkstone (乾隆御用白端，一白遮三丑)
- 5.4 The Authority Sector
- 5.5 Implications of Authority Stars
- 5.6 Imperial Harvest's Pursuit of Emperor Qian Long's Inkstone Traditions
 - The Royal Panda Collection
 - The Landscapes Collection
 - The Dragon Collection
 - The Crane Collection
 - The Shrimp Collection
 - Royal Emblem Collection
- 5.7 Qian Long Wishing Stone

PART 06

THE BENEFACTOR SECTOR AND HOW TO ACTIVATE IT

- 6.1 Mountains and Chinese History
- 6.2 The Significance of Mountains in Imperial Feng Shui
- 6.3 Identifying and Activating the Mountain Star
- 6.4 Imperial Harvest presents the Three Auspicious Elemental Qian Long Jadeite Mountains
- 6.5 Installation of the Imperial Harvest Qian Long Jadeite Mountain

PART 07

THE IMPERIAL FENG SHUI AUDIT PROCESS

- 7.1 Step 1: Landform Assessment
- 7.2 Step 2: Analysing and plotting the energy map of the property
- 7.3 Step 3: Mapping and Analysing the property's San Yuan Flying Star Chart
- 7.4 Master David performing Audits at Blessed Clients' Homes and Workplaces

PART 1

Introduction to Home Feng Shui

Many of us spend many hours at home or in the workplace. It therefore comes as no surprise that the energy in these spaces strongly correlates with our wealth, health and relationships.

Living and working in an environment with optimal Feng Shui can empower us to achieve peak performance in our career and investments, enabling us to enjoy breakthroughs and phenomenal success. In contrast, poor Feng Shui often brings about unexplained and undesirable consequences.

Five Auspicious External Landform Features

External landforms within the vicinity govern how macro energies, or qi, in the environment influence the wealth, health, relationship of occupants within a building. The following are five of the most important auspicious landform features that govern wealth generation:



I. Regular land shape (四点金)

Based on principles of Emperor Landform, the ideal shape of a plot of land is a square or rectangle. The term "Four Points of Gold" (四点金) was coined to describe the ideal piece of land as bearing a regular, or symmetrical, shape.



2. Incoming water flow (逆水朝堂)

Mountains govern benefactors, while water governs wealth (山管人丁，水管财).

The study of imperial landforms places immense emphasis on the position of mountains and water channels with respect to one's residence or place of work.

As natural landforms such as mountains and rivers are scarce in urban environments such as Singapore, buildings instead represent the mountains, while roads take on the role of the rivers by functioning as virtual water channels.

According to Imperial Feng Shui principles, the rivers or roads should ideally be flowing towards your home or workplace, angling towards the entrance or the facing direction. This auspicious phenomenon is known as 逆水朝堂, representing an eternal flow of wealth in your direction.



3. Embracing Water / Jade Belt (玉带环腰)

In ancient China, the donning of jade belts was a practice reserved exclusively for emperors and high-ranking government officials. In contrast, lower-ranked officials could only wear belts made from less exquisite materials, such as silver and copper. In the context of Imperial Feng Shui, the modern-day jade belt is represented in urban settings by roads surrounding a building, just as jade belts used to embrace the waists of the wealthy.



4. Metal Elemental Mountain (金山)

There are five elemental mountains in the study of Imperial Feng Shui landforms – Metal, Earth, Wood, Fire and Water.

Auspicious Mountain Shapes



Round Top

Powerful wealth generator and attracts tremendous benefactor support



Flat Top

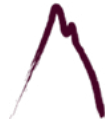
Similar to metal mountains, as earth produces metal



Conical Top

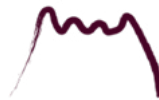
Represents the Greedy Wolf Star (贪狼星), therefore ideal for raising children with high scholastic achievements

Inauspicious Mountain Shapes



Sharp Top

Attracts misfortune and major illnesses



Wavy Top

Induces promiscuous behaviour and family disharmony

Given their desirable properties, the ancient Chinese elite were traditionally buried in auspicious Feng Shui positions near Metal, Earth or Wood mountains.



5. Bright Hall (明堂)

In Imperial Feng Shui applications, a Bright Hall refers to a large open space in front of a house.

One of the golden verses in the classics of Imperial Landform states that “宅前无余地，子孙稀”. This indicates a correlation between the amount of space in front of a house and the number of descendants and offspring.

Having a spacious bright hall in front of your residence will bring enduring wealth and prosperity for generations to come.

Debunking Common Fallacies of Classical Feng Shui in the Home/Workplace

Instead of these key tenets that are highly relevant and crucial to the study of Feng Shui in the home context, many Classical Feng Shui masters often compromise on the effectiveness of their advice by prescribing remedies based on questionable Feng Shui principles.

Often, these items are based on an incomplete or misguided understanding of Feng Shui, and involve, at best, tenuous links to authentic Imperial Feng Shui as practised by masters who once exclusively tended to the Feng Shui requirements of the emperors of the Ming and Qing dynasty. Such items are often fashioned from readily-available and synthetic materials, and bear no Feng Shui properties that propel clients towards their goals.

Let's examine some of the common fallacies perpetuated by Classical Feng Shui masters, and why they are irrelevant and ineffective in helping you achieve the desired effects.



I. 45 Degree Method

The wealth sector in a home or office is the area which enhances prosperity when correctly identified and activated. It contains the requisite energy to attract the flow of wealth, and represents the retention and accumulation of occupants' wealth.

In Classical Feng Shui, one of the most common methods of identifying the wealth sector in a home or office is known as the 45 Degree Method. According to this method, the wealth sector is identified as the area 45 degrees from the main entrance to the home or office. This is a simple and generic method that does not require the use of extensive calculations or any analysis of the floor plan of the property.

Furthermore, the 45 Degree Method disregards the year of construction, or time period, of the property, and Bazi charts of the occupants. Both of these are crucial components in the practice of authentic Imperial Feng Shui.



2. Use of Water Features

Classical Feng Shui masters have long advocated the use of water features, such as fountains and pools, as a means of activating the wealth sector in homes and offices. The rationale behind this is that water represents wealth.

However, water features were never found anywhere within the Forbidden Palace, including in the imperial court and the emperor's study room.

In fact, such water features are modern-day inventions proliferated by Classical Feng Shui masters in their misinterpretation of the concept of the water star in the San Yuan Xuan Kong Flying Star, and do not possess the relevant Feng Shui properties to activate the wealth sector. We will further explore the wealth sector and the water star in Part 4 of this book.



3. Use of Amethyst Crystal Caves

The Amethyst Crystal Cave is another household remedy commonly recommended by Classical Feng Shui masters as a quick and easy way of attracting wealth.

In contrast, the study of Imperial Feng Shui reveals that such caves represent fire mountain structures, which are considered to be inauspicious and can bring about disruptive lawsuits and destruction of wealth channels. In addition, the sharp edges of these caves generate Sha Qi which causes disharmony and poor health. More information about Sha Qi and its effects can be found in Part 5.

4. Use of Liu Li

With its bright attractive colours and intricate designs, this artificial combination of glass and lead dioxide is another quick-fix commonly proffered by Classical Feng Shui masters as a wealth luck-generating device.

Despite this, Liu Li sculptures do not inherently possess any auspicious energies or other Feng Shui properties that confer users any tangible benefits.



The Difference between Classical and Imperial Feng Shui

Classical Feng Shui masters often convey an air of predestination, and followers are often advised that they are entrapped along a predetermined and irrevocable path.

For instance, those who subscribe to Classical Feng Shui, and are warned that they will encounter headwinds in their personal and career pursuits, may often feel resigned and powerless to make positive changes in their lives.

At best, they may be advised to make slight adjustments to their actions and activities to mitigate the impacts of their impending adversities and afflictions.

On the other hand, those who receive predictions of success and prosperity are prone to complacency, often resting on their laurels in the confidence that they would go on to enjoy a comfortable and gratifying life without breaking much of a sweat.

We therefore observe that Classical Feng Shui generally does not hold much practical value for our day-to-day lives. It either does little to help us achieve our desired breakthrough successes, or lulls us into a misplaced sense of security over our supposedly smooth-sailing lives.

In contrast, Imperial Feng Shui encourages us to take charge of our lives and shape our destinies by empowering us in our pursuit of our desired outcomes. If we are indeed denied the agency to transform our luck and life direction, the practice of Feng Shui would be rendered redundant.

Imperial Feng Shui at Imperial Harvest

At Imperial Harvest, Master David and our team of consultants journey with each of our blessed clients through their respective life stages and life goals.

We harness the power of the finest earthly treasures to liberate and augment our clients' boundless potential through rigorous and uncompromising application of the same Imperial Feng Shui principles that have for centuries touched the lives of many.



Three Imperial Feng Shui Principles that underpin the practice of Imperial Feng Shui

A good Imperial Feng Shui practitioner has a good grasp of the invisible forces that govern the well-being and prosperity of the occupants within a given space. Similar to electromagnetic forces, these invisible forces affect many spheres of our everyday lives in major ways.

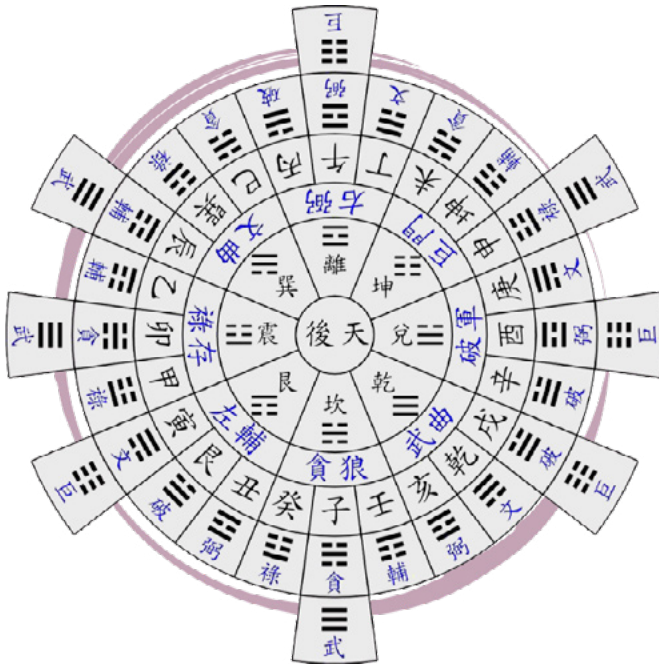
At Imperial Harvest, three Imperial Feng Shui principles underpin our consultations and earthly treasures:

	NW	N1	NE	
	1 4	6 8	8 6	
	8	3	1	
W	9 5	2 3	4 1	E
	9	7	5	
	5 9	7 7	3 2	
	4	2	6	
	SW	S1	SE	

I. San Yuan Xuan Kong Flying Star

This is the basic principle that forms the foundation of understanding the energy chart of the house.

By looking at the Flying Star chart, Master David can predict the wealth, prosperity and health of the occupants (i.e. the specific events that occupants have encountered), with the degree of accuracy being 45 degrees.

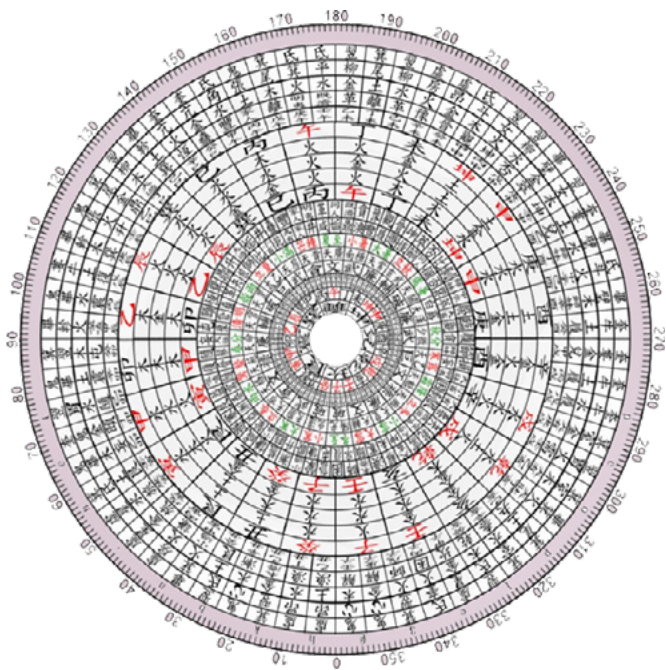


2. San Yuan Xuan Kong Liu Fa

This may be loosely translated as the six methods of Xuan Kong Feng Shui. The key principle of San Yuan Xuan Kong Liu Fa involves identifying the Zhen Ling Shen.

Master David applies Tai Sui Fa, one of the principles of San Yuan Xuan Kong Liu Fa, to determine the year and month of specific events that have occurred in the occupants' lives (such as career promotion, pay raise, divorce, health issues and academic breakthroughs).

The degree of accuracy is 15 degrees.



3. San Yuan Xuan Kong Da Gua

This Imperial Feng Shui principle offers the highest level of precision that Master David applies, boasting a degree of accuracy of 0.9375.

It is a testament to the exacting levels of precision Master David employs to fine tune the placement of Imperial Feng Shui remedies.

PART 2

Imperial Feng Shui Applications of the San Yuan Xuan Kong Flying Star

Of the three principles highlighted above, San Yuan Xuan Kong Flying Star is the most basic yet important concept that underpins the mapping of the energy chart of homes, offices or retail spaces.

This intricate process allows Imperial Feng Shui practitioners to forecast and interpret the well-being and prosperity of the occupants, homeowners or business owners of a given location.

This is further discussed below.

	NW	N1	NE	
	1 4	6 8	8 6	
	8	3	1	
W	9 5	2 3	4 1	E
	9	7	5	
	5 9	7 7	3 2	
	4	2	6	
	SW	S1	SE	

Principles of San Yuan Xuan Kong Flying Star

Applying the San Yuan Xuan Kong Flying Star involves assessing the facing direction, building intention and the layout of each location. The facing direction is determined by taking measurements from the main door using the Luo Pan (professional and precise Feng Shui compass).

In Imperial Feng Shui, the authentic method of determining the facing direction of a home involves measuring the direction of the main door by tucking the Luo Pan against the main door. This is the only method that produces a consistent and correct measurement of the home's facing direction.

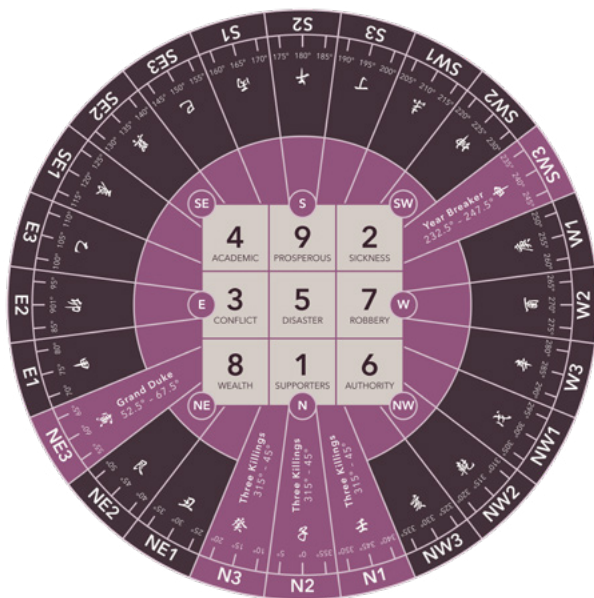
Five Layers of Flying Star Charts

There are five layers of Flying Star Charts. The first of these, known as the Natal Flying Star Chart, is the most important layer.



I. Natal Flying Star Chart

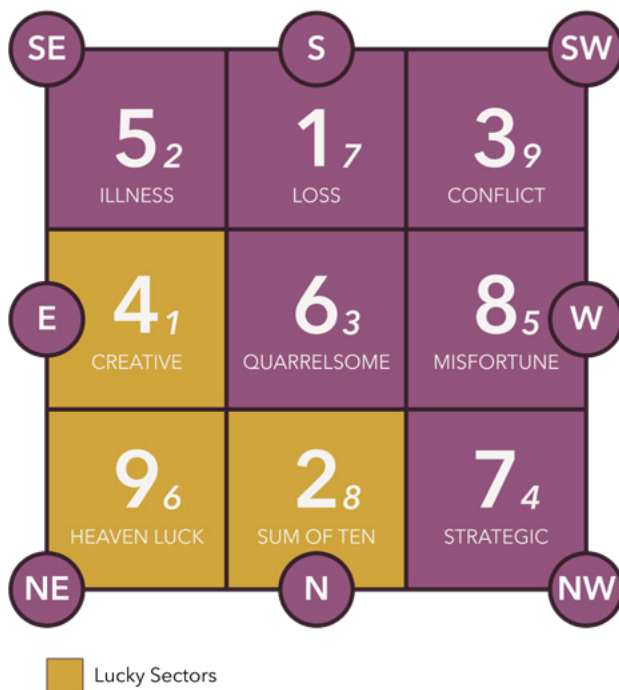
The Natal Flying Star chart is the most important layer of the five Flying Star Chart layers. Likened to the Bazi natal chart of a person, it is plotted based on the home's facing direction as well as its period.



2. Annual Flying Star Chart

This chart involves the stars that fly into a home, and it changes on a yearly basis. The change of annual flying star takes place during the start of spring (立春).

The annual flying stars are dynamic and fly into different sectors of the home each year. They are likened to the yearly luck pillar of a person's bazi chart, and are responsible for activating the auspicious sectors in the home.

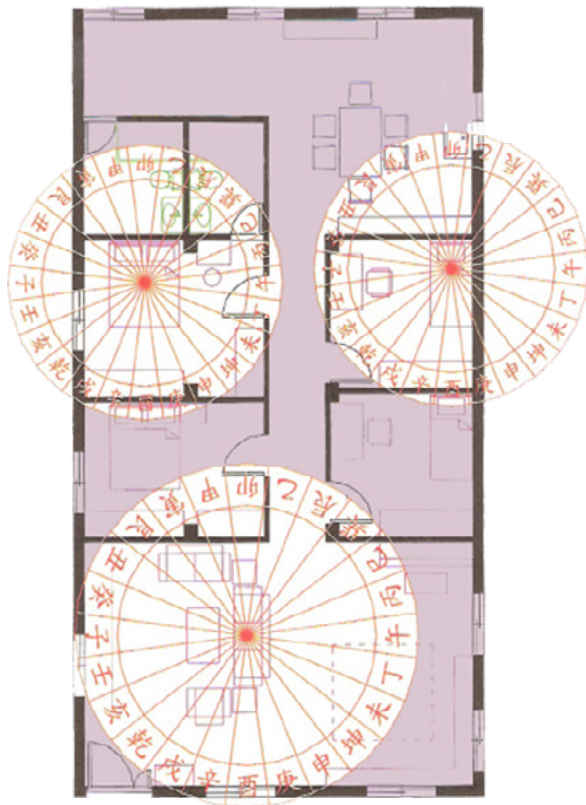


3. Monthly / Daily / Hourly Flying Stars

The monthly/daily/hourly flying star chart tracks the movement of auspicious and inauspicious stars at their respective time intervals. These charts serve the purpose of guiding homeowners on important date selections with regard to significant events such as moving in, renovation, activation of auspicious stars and de-activation of inauspicious stars.

How to plot the Natal Flying Star chart based on San Yuan Xuan Kong Flying Star principles

To plot the Natal Flying Star chart, it is important to understand the concept of period and facing direction. Armed with these two pieces of information, we will be able to plot the Flying Star chart of a property.



I. Period of a property

San Yuan Xuan Kong Flying Star consists of a time component whereby a 180-year timeline is divided into 9 blocks of 20 years. Each block is known as a period.

In order to find out the period of a particular property, we need to know the year it was completed as well as the year and month it was first occupied. Each property acquires a Qi distribution or energy chart unique to that period. Its Qi distribution would differ from that of a property from any other period.

Determining the Period for High-rise Buildings (HDB and condominium apartments, Office Buildings)	
Period	Year of Occupation
I	Feb 1864 to Jan 1884
2	Feb 1884 to Jan 1904
3	Feb 1904 to Jan 1924
4	Feb 1924 to Jan 1944
5	Feb 1944 to Jan 1964
6	Feb 1964 to Jan 1984
7	Feb 1984 to Jan 2004
8	Feb 2004 to Jan 2024
9	Feb 2024 to Jan 2044

For clarification, if a building commenced construction in 2003 (Period 7) but was completed and first occupied in 2005 (Period 8), the building would fall under Period 8.

Determining the Period for Landed Properties (Terraced, Semi-detached, Detached houses)

Such properties are connected to the earth's energy, making their period defined differently. Their period shifts according to the move-in dates of each successive owner.

For example:

House A was completed in August 1990 (Period 7),
and the first owner moved in that same month.

House A subsequently changed hands and the second owner moved in
in May 2005 (Period 8).

House A then belongs to Period 8.

2. Facing Direction of a property

With an understanding of the property's period, we then need to determine its facing direction. As modern architecture evolves, certain properties could take on multiple facing directions. This makes plotting the Natal Flying Star chart more complicated.

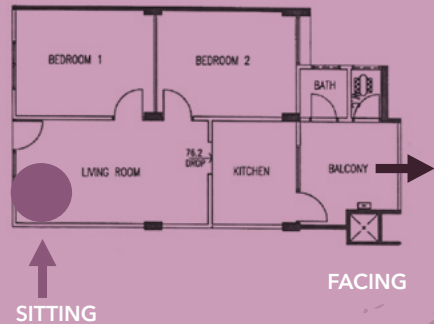
These are a few generic rules we apply to determine the facing direction of common property types in Singapore.

Types of property	Facing direction
Landed houses	Main entrance / driveway
Condominiums with balcony	Balcony
Condominiums without balcony	Main window in the living room
HDB apartments with main doors facing each other, with a common staircase between them	Main window
HDB apartments with a long corridor outside	Main door
HDB apartments with a balcony	Balcony



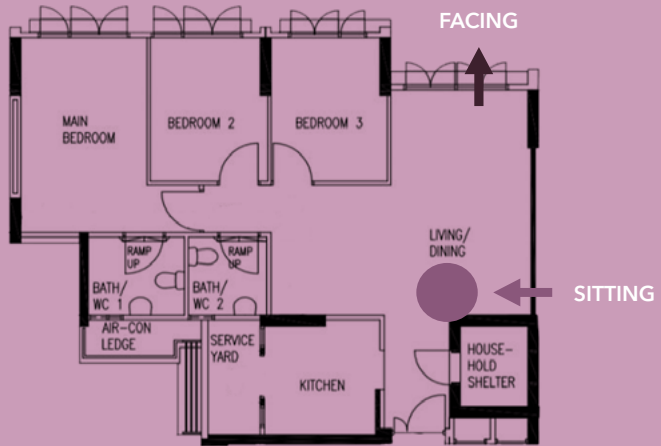
Landed Property

For landed properties, the main entrance/driveway will be considered as the facing direction of the house



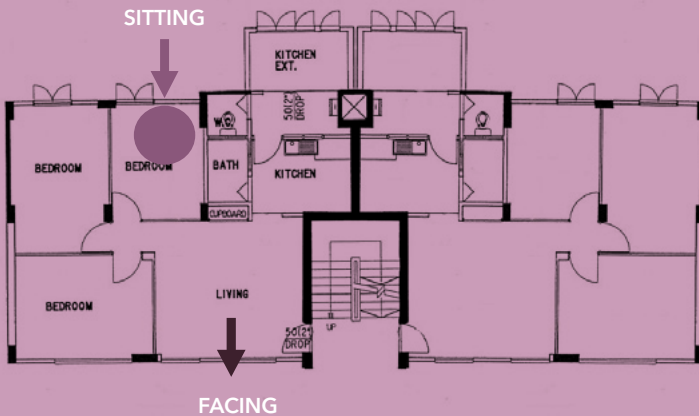
Condominiums with balcony

The facing direction of the house will be the balcony



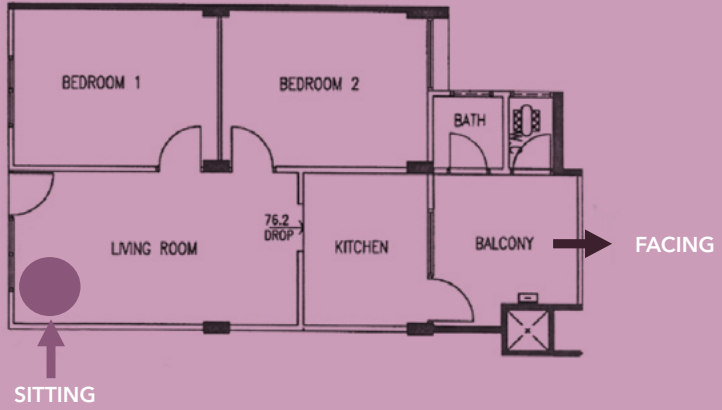
Condominium with no balcony

The facing direction is the main window in the living room



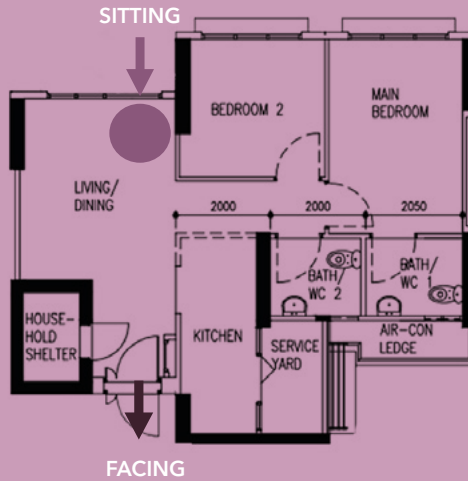
HDB with entrance facing each other

The facing direction is the main window in the living room



HDB with balcony

The facing direction of the house will be the balcony



HDB with balcony

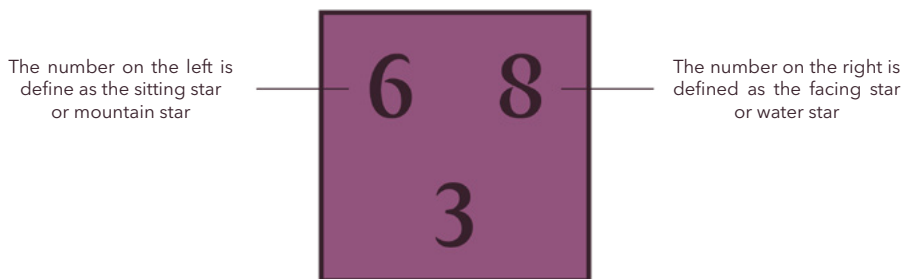
The facing direction of the house will be the balcony

Applying San Yuan Xuan Kong Flying Star

Master David applies the Flying Star chart for the purpose of predicting past events that have occurred in the lives of the occupants, right down to their specific year and month.

This demonstrates Master David's impeccable mastery of Imperial Feng Shui.

Understanding the 8I Flying Star Combinations in each chart



In Imperial Feng Shui, the mountain star governs benefactors, health and harmony. On the other hand, the water star governs opportunities, intuition and judgment. Both these stars must be positioned at the appropriate sectors of our property. Only then can our living (or working) environment support our pursuit of success.

Master David has distilled three generations of Imperial Feng Shui wisdom into a powerful and effective table that explains the various effects of the 81 Flying Star combinations.

Mountain Star	Water Star	Implications
I	I	<p>Double Water (I)</p> <p>Positive:</p> <ul style="list-style-type: none"> Water in front of the Kan Sector promotes intelligence and supports academic achievements, creativity and artistic flair. <p>Negative:</p> <ul style="list-style-type: none"> The existence of a hill or a high-rise building on the 1,1 sector could bring deafness to the occupants. Other health risks include kidney, digestive and bladder issues.
I	2	<p>Earth (2) destroys water (I)</p> <p>Negative:</p> <ul style="list-style-type: none"> Water (1) represents the womb, while mother (2) represents married female members. This combination therefore negatively affects the female abdomen (2). Married women will be prone to miscarriages, childbirth complications and digestive issues A room, door or stove situated at the 1,2 sector gives rise to womb-related diseases or miscarriage. A door at this sector also brings misfortune to middle son (1) - unmarried males over the age of 16

Mountain Star	Water Star	Implications
I	3	<p>Water (I) produces Wood (3)</p> <p>Positive:</p> <ul style="list-style-type: none"> • Career advancement opportunities abound • Good income initially, but often short-lived and diminishes over time • Tang Lang (1) represents intelligence and Lu Chun (3) represents wealth. Intelligence is used to acquire more wealth. <p>Negative:</p> <ul style="list-style-type: none"> • If a door is at the 1,3 sector, occupants may face difficulty in debt collection or payment. • If annual 7 flies into the 1,3 sector, a condition known as Piercing Heart Sha ensues. Leg injuries, robbery and bankruptcy may befall occupants, and they may engage in extramarital affairs and other immoralities. Lightning also tends to strike and affect the property.
I	4	<p>Water (I) produces Wood (4)</p> <p>Positive:</p> <ul style="list-style-type: none"> • Academic achievements with involvement in artistic and creative pursuits such as writing and performing arts. This sector is therefore recommended for use as a study room. • Combination of Tan Lang (1), representing intelligence, and Wen Qu (4), representing the academic sphere, results in occupants in this sector excelling in studies and research. • When in Period 3 or 4, annual star 7 strengthens the auspicious aspects of 1,4. In period 8, star 4 is a neutral star. • High rise buildings situated at 1,4 encourage academic success in occupants. <p>Negative:</p> <ul style="list-style-type: none"> • Bad door positioning or water existing in the Zhen Shen sector may lead to sexual misconduct. This can be explained by the affinity between wood (4) and water (1) - which represent female (eldest daughter 4) and male (middle son 1)

Mountain Star	Water Star	Implications
I	5	<p>Bad Earth (5) destroys Water (I)</p> <p>Negative:</p> <ul style="list-style-type: none"> • Occupants prone to illnesses and accidents due to the malevolent 5 Yellow Star. • Middle son experiences health issues relating to the ear, reproductive organs, kidney and digestive system. • May also cause miscarriage or womb cancer which makes it a bad combination for the marital bedroom, kitchen or dining room.
I	6	<p>Metal (6) produces Water (I)</p> <p>Positive:</p> <ul style="list-style-type: none"> • Occupants involved in military or physical/manual work experience wealth and career progression. • The 1,6 sector brings career advancements to occupants, when combined with monthly or yearly star 2. • This sector also increases wealth, when combined with monthly or yearly star 8. • With the main door in this location, travel opportunities arise when the monthly or yearly 9 star arrives in the 1,6 sector. <p>Negative:</p> <ul style="list-style-type: none"> • Properties with the Fan Yin and Fu Yin patterns, which have a 1,6 combination, with a door located in this sector tend to experience loss of wealth.
I	7	<p>Metal (7) produces Water (I)</p> <p>Negative:</p> <ul style="list-style-type: none"> • Occupants in this sector are prone to being bitten by poisonous animals such as snakes • Married and unmarried males will experience a tendency to womanise • Occupants tend to bleed easily due to the combination of blood, represented by Water (1), and Po Jun (7).

Mountain Star	Water Star	Implications
I	8	<p>Earth (8) controls Water (I)</p> <p>Positive:</p> <ul style="list-style-type: none"> • Good door positioning increases revenues and prosperity. <p>Negative:</p> <ul style="list-style-type: none"> • Room sector with this number is unfavourable for middle son (1) because Earth (8) destroys Water (1).
I	9	<p>Water (I) cooperates with Fire (9)</p> <p>Positive:</p> <ul style="list-style-type: none"> • Good relationship between husband and wife. • Youthful energy and virility of middle son (1) and middle daughter (9) suggests likelihood of many children.
2	I	<p>Earth (2) destroys Water (I)</p> <p>Negative:</p> <ul style="list-style-type: none"> • (1) represents the womb and (2) represents married women with children. • Common health issues: Gynaecological, abdominal – digestive system. • Unfavourable for females. Likely to cause miscarriage or gynaecological problems if room, door or stove is situated at 2,1 sector. • Unfavourable for males, as a door at this sector will bring misfortune to the middle son (unmarried males over the age of 16).
2	2	<p>Double Bad Earth (2)</p> <p>Positive:</p> <ul style="list-style-type: none"> • Likely to enjoy high land and property ownership due to inheritance or hard work. <p>Negative:</p> <ul style="list-style-type: none"> • Children, especially those whose rooms or main doors are in the 2,2 sector, are prone to ill health. • Unfavourable for the middle son.

Mountain Star	Water Star	Implications
2	3	<p>Wood (3) controls Bad Earth (2)</p> <p>Negative:</p> <ul style="list-style-type: none"> • Presence of "bullfight sha" which gives rise to family arguments and the presence of malefactors. • Women may experience digestive and abdominal health issues. • Financial troubles giving rise to lawsuits/imprisonment may arise.
2	4	<p>Wood (4) controls Bad Earth (2)</p> <p>Negative:</p> <ul style="list-style-type: none"> • Likelihood of misunderstanding and arguments between mother (2) and daughter-in-law, if they live within the 2,4 sector. • Women prone to hip rheumatism and diabetic complications.
2	5	<p>Double Bad Earth (2,5)</p> <p>Negative:</p> <ul style="list-style-type: none"> • Financial instability which may lead to bankruptcy. • Prone to health issues such as stomach/intestinal cancers, miscarriages, various long-term diseases and death. • Area should be avoided entirely.

Mountain Star	Water Star	Implications
2	6	<p>Bad Earth (2) produces Metal (6)</p> <p>Positive:</p> <ul style="list-style-type: none"> • Attracts wealth and nobility. <p>Negative:</p> <ul style="list-style-type: none"> • Health issues: Intestinal, abdominal issues • Generates miserly and greedy behaviours. • Occupants may encounter difficulties in getting married, and also tend to suffer from stomach and menstrual-related complications • Rooms in the 2,6 sector should not be occupied by the matriarch/patriarch of the household or they may become highly superstitious and vulnerable to deviant supernatural advice
2	7	<p>Bad Earth (2) produces Metal (7)</p> <p>Negative:</p> <ul style="list-style-type: none"> • Occupants may be prone to digestive issues such as food poisoning and diarrhoea. • As both are yin stars, younger and older women could find it difficult to get along. • Women may exhibit lustful and domineering behaviours, and also enjoy career advancements at the expense of male occupants.
2	8	<p>Double Earth (2,8)</p> <p>Positive:</p> <ul style="list-style-type: none"> • Yin 2 and Yang 8 are complementary. • Combination of Ju Men (2), governing land and property, and Jue Pu (8) result in the acquisition or inheritance of numerous properties. <p>Negative:</p> <ul style="list-style-type: none"> • Older women occupants tend to have affairs with younger men.

Mountain Star	Water Star	Implications
2	3	<p>Fire (9) produces Bad Earth (2)</p> <p>Negative:</p> <ul style="list-style-type: none"> • Female occupants are likely to become aggressively authoritative, and remain single against their wishes. • Children may present physical abnormalities from birth, and suffer from impaired or slower cognitive development.
3	1	<p>Water (1) produces Wood (3)</p> <p>Positive:</p> <ul style="list-style-type: none"> • Tan Lang (1) represents intelligence and Lu Cun (3) represents wealth. This helps with academic development and career progression. • Occupants' mental capacities and intelligence in terms of acquiring wealth and material luxury are increased. <p>Negative:</p> <ul style="list-style-type: none"> • As both stars are yang, the above positives are superficial and short-lived. Loss of initial wealth tends to occur. • If a door is at the 1,3 sector, occupants may face difficulty in debt collection or payment. • Occupants also tend to encounter scandals, gossips and petty people
3	2	<p>Wood (3) controls Bad Earth (2)</p> <p>Negative:</p> <ul style="list-style-type: none"> • Occupants tend to encounter gossip, rumours or incitations that may bring about scandals and lead to lawsuits and breaches of contract. There is a likelihood of imprisonment. • Occupants may face difficulties in collecting payments/debts. • Unfavourable for females; health issues include abdominal complications, menstrual pains, stomach and eating disorders, anorexia nervosa, bulimia and obesity.

Mountain Star	Water Star	Implications
3	3	<p>Double Wood (3)</p> <p>Negative:</p> <ul style="list-style-type: none"> • Lawsuits result from fights and arguments. • Death of children from shootings and homicides may occur.
3	4	<p>Double Wood (3,4)</p> <p>Positive:</p> <ul style="list-style-type: none"> • Lu Chun (3), the star of wealth, and Wen Qu (4), the star of academic know-how, combine to bring wealth to occupants. <p>Negative:</p> <ul style="list-style-type: none"> • Occupants tend to be indecisive and make wrong decisions which lead to financial losses. • They also face temptations to acquire wealth through immoral means, ultimately leading to their downfall. • Loss of wealth through gambling is common.
3	5	<p>Wood (3) controls Bad Earth (5)</p> <p>Negative:</p> <ul style="list-style-type: none"> • Occupants may encounter financial difficulties and even bankruptcy due to addictions and investment losses. • They also experience health issues such as digestive disorders, leg problems, and liver cancers.
3	6	<p>Metal (6) destroys Wood (3)</p> <p>Negative:</p> <ul style="list-style-type: none"> • Injuries caused by horses, or by impact with wood, are common. Leg injuries leading to limps also tend to occur. • Male occupants are likely to suffer from headaches and migraines, especially if a stove is located in the 3,6 sector. • Rooms in this sector should not be occupied by the eldest son.

Mountain Star	Water Star	Implications
3	7	<p>Metal (7) destroys Wood (3)</p> <p>Negative:</p> <ul style="list-style-type: none"> • Health issues including liver cancers, eye disorders and leg problems are common. • Disharmonies in the family tend to arise, leading to separation/divorce of married couples. • Occupants may fall victim to robbery and fraud. • Knife- or metal-related injuries, as well as shooting-related ones, are likely • Occupants may lose wealth through failed businesses or stock market crashes.
3	8	<p>Wood (3) controls Earth (8)</p> <p>Positive:</p> <ul style="list-style-type: none"> • Siting a door in the 3,8 sector brings wealth to occupants. <p>Negative:</p> <ul style="list-style-type: none"> • Children occupying a room in this sector are prone to illnesses and injuries that could lead to death. Discord between them and their parents could also occur. • Health issues including heart diseases and asthma could arise in occupants.
3	9	<p>Wood (3) produces Fire (9)</p> <p>Positive:</p> <ul style="list-style-type: none"> • Children tend to be intelligent and studious, and bring luck to the home. <p>Negative:</p> <ul style="list-style-type: none"> • Liver-related diseases tend to be common.

Mountain Star	Water Star	Implications
4	I	<p>Water (I) produces Wood (4)</p> <p>Positive:</p> <ul style="list-style-type: none"> As (1) and (4) have a yin and yang relationship, the production cycle is long lasting. Combination of Tan Lang (1), representing intelligence, and Wen Qu (4), representing the academic sphere, results in occupants in this sector excelling in studies and research. Good door position favours academic achievement. If water exists in sector 4,1, it could promote academic excellence. <p>Negative:</p> <ul style="list-style-type: none"> When (1) is not in period, (4) will drain the water. This represents a gua image of an unmarried male aged above 16 and married female - it implies a man having a sexual relationship with his sister in law. It gives rise to a peach blossom combination, whereby water in the Zhen Shen sector leads to sexual misconduct. Water situated at the back of the property promotes sexual misconduct.
4	2	<p>Wood (4) controls Bad Earth (2)</p> <p>Negative:</p> <ul style="list-style-type: none"> Misunderstandings and arguments between mother (2) and daughter-in-law (4) are common. Women are likely to suffer rheumatism of the hips (trigram Xun 4 signifies winds bringing rheumatism). Diabetes-related problems are also common because of the adverse effect on the pancreas (abdomen area represented by 2).

Mountain Star	Water Star	Implications
4	3	<p>Double Wood (4,3)</p> <p>Positive:</p> <ul style="list-style-type: none"> • A married male without kids (3) and a married female without kids (4) make up a yin-yang balance and are therefore compatible. • Lu Chun (3), the star of wealth, and Wen Qu (4), the star of academic know-how, combine to bring wealth to occupants. <p>Negative:</p> <ul style="list-style-type: none"> • Occupants tend to be indecisive and make wrong decisions, leading to financial losses. • They also face temptations to acquire wealth through immoral means, ultimately leading to their downfall. • Loss of wealth through gambling is common. • With monthly star 5, strokes or mental illnesses are common. • With monthly star 7, accidents involving sharp objects are common.
4	4	<p>Double Wood (4,4)</p> <p>Negative:</p> <ul style="list-style-type: none"> • Occupants tend to remain jobless and lazy. • Loss of wealth due to an indulgence in extravagant lifestyles.
4	5	<p>Wood (4) controls Bad Earth (5)</p> <p>Negative:</p> <ul style="list-style-type: none"> • Occupants tend to be addicted to gambling and involved in gangs. • Skin diseases, digestive problems and breast cancers are common

Mountain Star	Water Star	
4	6	<p>Metal (6) controls Wood (4)</p> <p>Negative:</p> <ul style="list-style-type: none"> Female occupants in particular are prone to being hurt by sharp metal objects. Eye and mouth diseases are common Occupants are susceptible to suicide by hanging. Occupants suffer from hectic work schedules and lack a work-life balance.
4	7	<p>Metal (7) controls Wood (4)</p> <p>Negative:</p> <ul style="list-style-type: none"> Respiratory health issues are common. Sisters suffer from disharmony that manifests in the form of quarrels. Occupants may be unpopular at work and face challenges in career advancement.
4	8	<p>Wood (4) controls Earth (8)</p> <p>Positive:</p> <ul style="list-style-type: none"> Brings wealth to occupants. <p>Negative:</p> <ul style="list-style-type: none"> Generates conflict between parents and children Children should avoid using rooms in this sector as they may be sickly and injury-prone.
4	9	<p>Wood (4) produces Fire (9)</p> <p>Positive:</p> <ul style="list-style-type: none"> Children are intelligent and prudent in managing their finances. <p>Negative:</p> <ul style="list-style-type: none"> Female occupants tend to be domineering and overbearing. Occupants tend to be stingy.

Mountain Star	Water Star	Implications
5	I	<p>Bad Earth (5) controls Water (I)</p> <p>Negative:</p> <ul style="list-style-type: none"> • Occupants are prone to death, illnesses and accidents due to Lian Zhen (5). • Middle son (unmarried male aged 16 and above) experiences health issues relating to the ear, reproductive organs, kidney and digestive system. • May also cause miscarriage or womb cancer which makes it a bad combination for the marital bedroom, kitchen or dining room.
5	2	<p>Bad Double Earth (5,2)</p> <p>Positive:</p> <ul style="list-style-type: none"> • In period 1 and 2, star 2 is a heaven doctor star, bringing a healing effect. Otherwise, it is a sickness star. <p>Negative:</p> <ul style="list-style-type: none"> • Wrong placement of water of Ling Shen or Zhen Shen brings a prevalence of illnesses. • Sitting a bed in sectors 2,5 or 5,2, with a stove sitting on 7 or facing 7, can lead to children being born deformed or mentally impaired • If a mountain is in the north sector with a combination of 2,5 or 8 in the south, deafness in children may result. • If the facing star is either 2 or 5 with a base star of either 2 or 5, • Financial instability which may lead to bankruptcy may occur. • Stomach/intestinal cancer, miscarriage, long-term diseases and even death are likely. • This area should be avoided entirely.
5	3	<p>Wood (3) controls Bad Earth (5)</p> <p>Negative</p> <ul style="list-style-type: none"> • Star 5 could bring about a loss of wealth, adverse health effects and even death, especially for the eldest son. • Occupants tend to suffer financial losses and even bankruptcy. • With Star 4, serious flu is likely.

Mountain Star	Water Star	Implications
5	4	<p>Wood (4) controls Bad Earth (5)</p> <p>Negative</p> <ul style="list-style-type: none"> • Breast cancers are likely to befall the eldest daughter. • The presence of monthly or yearly star 3 results in bankruptcy due to excessive gambling and wilful indulgence. • Star 5 is the star of adversity which could hinder academic progress and creativity (represented by Star 4)
5	5	<p>Bad Double Earth (5)</p> <p>Negative:</p> <ul style="list-style-type: none"> • Poor health tends to befall occupants, with bone cancers, impotence and physical injuries especially common in Period 7 properties • Severe struggles, disharmony and discontent may arise, possibly leading to divorce.
5	6	<p>Bad Earth (5) produces Metal (6)</p> <p>Negative:</p> <ul style="list-style-type: none"> • Occupants are especially prone to bone fractures and head injuries. • This sector is generally unfavourable to seniors, while the eldest son may be afflicted with mental health disorders.
5	7	<p>Bad Earth (5) produces Metal (7)</p> <p>Negative:</p> <ul style="list-style-type: none"> • Alcoholism, venereal diseases and incidences of food poisoning are common. • Placing the bed in the 5,7 sector increases the likelihood of contracting bronchitis or diseases of the oesophagus. • Occupants may also encounter malefactors, gossip and backstabbers.

Mountain Star	Water Star	Implications
5	8	<p>Double Earth (5,8)</p> <p>Negative:</p> <ul style="list-style-type: none"> • Skin diseases are common. • The 5,8 sector is generally unfavourable for young children.
5	9	<p>Fire (9) produces Bad Earth (5)</p> <p>Negative:</p> <ul style="list-style-type: none"> • Occupants have an increased likelihood of contracting venereal diseases, brought about by engaging in paid sexual services. • Occupants are also more likely to require surgery. • Certain stove positions could give rise to eye and heart diseases, and some cancers. • Occupants are more likely to abuse drugs, sometimes even committing drug-induced suicides.
6	I	<p>Metal (6) produces Water (I)</p> <p>Positive:</p> <ul style="list-style-type: none"> • Tan Lang (1) represents intelligence and Wu Qu (6) represents military, physical or manual labourer roles. Occupants involved in military or physical/manual work experience wealth and career progression. • The 6,1 sector brings career advancements to occupants involved in the use of manual skills. <p>Negative:</p> <ul style="list-style-type: none"> • Occupants are prone to haemorrhages and knife-related injuries.

Mountain Star	Water Star	Implications
6	2	<p>Bad Earth (2) produces Metal (6)</p> <p>Positive:</p> <ul style="list-style-type: none"> Attracts wealth and nobility. <p>Negative:</p> <ul style="list-style-type: none"> Occupants may encounter difficulties in getting married, and also tend to suffer from stomach- and menstrual-related complications Rooms in the 6,2 sector should not be occupied by the matriarch/patriarch of the household or they may become highly superstitious and vulnerable to deviant supernatural advice When the stars 6 and 2 are in retreating Qi, occupants commonly suffer from nightmares, and encounter spirits and supernatural occurrences.
6	3	<p>Metal (6) controls wood (3)</p> <p>Negative:</p> <ul style="list-style-type: none"> Injuries caused by horses, or by impact with wood, are common. Leg injuries leading to limps also tend to occur. Occupants are likely to suffer from headaches and migraines Rooms in this sector should not be occupied by the eldest son. Other common health issues include cirrhosis, knife wounds, and injuries from car accidents
6	4	<p>Metal (6) controls Wood (4)</p> <p>Negative:</p> <ul style="list-style-type: none"> Due to the cross-sword sha (交劍煞) effect, implications arising from the 6,4 sector are similar to those of the 4,6 sector. However, instead of being prone to suicide, occupants are more likely to be strangled. This difference arises because in the 6,4 sector, 6 (symbolising the head) comes before 4 (symbolising a rope).

Mountain Star	Water Star	Implications
6	5	<p>Bad Earth (5) produces Metal (6)</p> <p>Negative:</p> <ul style="list-style-type: none"> • Occupants are especially prone to bone fractures and head injuries. • The eldest son may be afflicted with mental health disorders.
6	6	<p>Double Metal (6)</p> <p>Positive:</p> <ul style="list-style-type: none"> • Wealth and health abound for period 6 <p>Negative:</p> <ul style="list-style-type: none"> • Prone to bone fractures or afflictions to the head region (migraine, brain tumour, vertigo dizziness etc) • Unfavourable for seniors or elder son, who is likely to suffer from mental health disorders.
6	7	<p>Double Metal (6,7)</p> <p>Negative:</p> <ul style="list-style-type: none"> • Incidences of male-female compatibility are likely. • The clash of 2 metals (6 and 7) is likely to bring about fights, in the form of domestic and workplace discord. Ill temper is common among occupants. • Grievances among employees against the management may also occur. • Occupants are prone to knife or sword injuries, and should be wary of getting into fights or antagonizing enemies who may seek revenge. • Quarrelling among brothers, jealousy and abusive cheating is common • Occupants are susceptible to armed robbery and death involving metallic objects. • Common health issues include venereal and skin diseases, and illnesses affecting the left side of the body

Mountain Star	Water Star	Implications
6	8	<p>Earth (8) produces metal (6)</p> <p>Positive:</p> <ul style="list-style-type: none"> • This sector facilitates advancements in career, and heightens fame and reputation. • It also enhances wealth through land inheritance • Occupants are likely to find themselves in powerful positions of authority. • This sector empowers occupants in military or law enforcement careers. • The arrival of the yearly, monthly or daily star 1 heralds prosperity. <p>Negative:</p> <ul style="list-style-type: none"> • Occupants may experience loneliness and poor mental health.
6	9	<p>Fire (9) controls Metal (6)</p> <p>Negative:</p> <ul style="list-style-type: none"> • Children, especially sons, may be disobedient. • Fathers in the property could be autocratic, antagonistic and authoritative in the upbringing of his children. • Children, especially the middle daughter (9) (referring to unmarried females above the age of 16), may be rebellious. • The arrival of the yearly or monthly star 5 triggers epidemics such as outbreaks of mad cow disease, dengue fever, Ebola and cholera, which may bring death to occupants. • Occupants face hectic work schedules involving frequent travel, and may physically cough up blood

Mountain Star	Water Star	Implications
7	I	<p>Metal (7) produces Water (I)</p> <p>Negative:</p> <ul style="list-style-type: none"> • Occupants in this sector are prone to alcoholism and being bitten by poisonous animals such as snakes. • Married and unmarried males will experience a tendency to womanize. • Occupants tend to bleed easily due to the combination of blood, represented by Water (1), and Po Jun (7).
7	2	<p>Bad Earth (2) produces Metal (7)</p> <p>Negative:</p> <ul style="list-style-type: none"> • Unfavourable for males. • When the 7,2 sector is situated in front of a red building, fire accidents occur with monthly or yearly star 9. • Competitors may thrive at the expense of occupants' business pursuits. • Occupants may be prone to coughs, diarrhoea and knife injuries, and encounter problems conceiving. • Women may exhibit lustful and domineering behaviours, and also enjoy career advancements at the expense of male occupants.
7	3	<p>Metal (7) controls Wood (3)</p> <p>Negative:</p> <ul style="list-style-type: none"> • The arrival of star 9 triggers fire accidents in this sector. • Vehicle accidents are likely if accompanied by monthly or yearly star 3. • Disharmonies in the family tend to arise, leading to separation/divorce of married couples. • Occupants may fall victim to robbery and fraud. • Knife- or metal-related injuries, as well as shooting-related ones, are likely. • Occupants may lose wealth through failed businesses or stock market crashes.

Mountain Star	Water Star	Implications
7	4	<p>Metal (7) controls Wood (4)</p> <p>Negative:</p> <ul style="list-style-type: none"> • Blood-related health issues are common. • Sisters suffer from disharmony that manifests in the form of quarrels. • Occupants may be unpopular at work and face challenges in career advancement.
7	5	<p>Bad Earth (5) produces Metal (7)</p> <p>Negative:</p> <ul style="list-style-type: none"> • Alcoholism and incidences of food poisoning are common. • The arrival of the yearly or monthly star 9 increases the likelihood of venereal diseases. • Placing the bed in the 5,7 sector increases the likelihood of contracting bronchitis or other respiratory conditions. • Other health conditions include those affecting the mouth and heart • Occupants may also encounter malefactors, gossip and backstabbers.
7	6	<p>Double Metal (6,7)</p> <p>Due to the cross-sword sha (交劍煞) effect, implications arising from the 7,6 sector are similar to those of the 6,7 sector.</p>

Mountain Star	Water Star	Implications
7	7	<p>Double Metal (7,7)</p> <p>Positive</p> <ul style="list-style-type: none"> • Occupants may potentially become prominent and successful doctors, lawyers, Chinese physicians or Feng Shui masters if the door of the 7,7 sector faces a half-gourd-shaped mountain. • On the other hand, if this door faces a hammer or chopper-shaped mountain, occupants tend to be good blacksmiths, butchers or cooks. • Occupants excel in the military, in sports or in jobs requiring physical skills or manual labour. <p>Negative</p> <ul style="list-style-type: none"> • Thefts or robberies may befall occupants at certain times of the year. • Situating a door at the 7,7 sector and facing a large-leafed green plant heightens the risk of occupants encountering a female ghost. Occupants should remove any such plants near this sector.
7	8	<p>Earth (8) produces Metal (7)</p> <p>Positive</p> <ul style="list-style-type: none"> • Situating a door at this sector can lead to good wealth accumulation. <p>Negative</p> <ul style="list-style-type: none"> • Heightened risk of young men and women eloping. • These young men and women tend to engage in excessive sexual contact.
7	9	<p>Fire (9) counters Metal (7)</p> <p>Negative</p> <ul style="list-style-type: none"> • Occupants face increased risk of fire accidents at certain times of the year. • As Fire (9) counters Metal (7), conflicts and confrontations among female occupants are common. • The arrival of the yearly or monthly star 5 triggers epidemics such as outbreaks of mad cow disease, dengue fever, Ebola and cholera, which may bring death to occupants. • With the arrival of Poison (5), occupants are likely to contract venereal diseases from brothel visits.

Mountain Star	Water Star	Implications
8	I	<p>Earth (8) controls Water (I)</p> <p>Positive:</p> <ul style="list-style-type: none"> • Good door positioning increases revenue and prosperity. <p>Negative:</p> <ul style="list-style-type: none"> • Room sector with this number is unfavourable for middle son (1) because Earth (8) destroys Water (1). Sickness, accidents or even death are likely.
8	2	<p>Double Earth (2,8)</p> <p>Positive:</p> <ul style="list-style-type: none"> • Yin 2 and Yang 8 are complementary. • Combination of Ju Men (2), governing land and property, and Jue Pu (8) result in the acquisition or inheritance of numerous properties. <p>Negative:</p> <ul style="list-style-type: none"> • Older women occupants tend to have affairs with younger men. Such relationships could also occur in the workplace.
8	3	<p>Wood (3) controls Earth (8)</p> <p>Negative:</p> <ul style="list-style-type: none"> • Avoid locating bedrooms for children in this sector as it can result in disharmony between children and parents. • A range of adverse effects could occur if the property is located in a bad position.
8	4	<p>Wood (4) controls Earth (8)</p> <p>Positive:</p> <ul style="list-style-type: none"> • Brings wealth to occupants. <p>Negative:</p> <ul style="list-style-type: none"> • Generates conflict between parents and children. • Children should avoid using rooms in this sector as they may be sickly and injury-prone.

Mountain Star	Water Star	Implications
8	5	<p>Double Earth (5,8)</p> <p>Negative:</p> <ul style="list-style-type: none"> • Skin diseases are common. • This sector is generally unfavourable for young children.
8	6	<p>Earth (8) produces Metal (6)</p> <p>Positive:</p> <ul style="list-style-type: none"> • This sector facilitates advancements in career, and heightens fame and reputation. • It also enhances wealth through land inheritance. • Occupants are likely to find themselves in powerful positions of authority. • This sector empowers occupants in military or law enforcement careers. • The arrival of the yearly, monthly or daily star 1 heralds prosperity.
8	7	<p>Earth (8) produces Metal (7)</p> <p>Positive</p> <ul style="list-style-type: none"> • Situating a door at this sector can lead to good wealth accumulation. <p>Negative</p> <ul style="list-style-type: none"> • Heightened risk of young men and women eloping. • These young men and women tend to engage in excessive sexual contact.
8	8	<p>Double Earth (8)</p> <p>Positive:</p> <ul style="list-style-type: none"> • Empowers occupants with high land ownership.

Mountain Star	Water Star	Implications
8	9	<p>Fire (9) produces Earth (8)</p> <p>Positive:</p> <ul style="list-style-type: none"> • This sector brings its occupants engaging activities, auspicious occasions and joyous events. • When combined with monthly star 2, this sector ushers in great prosperity.
9	I	<p>Water (I) cooperates with Fire (9)</p> <p>Positive:</p> <ul style="list-style-type: none"> • Good relationship between husband and wife. • Youthful energy and virility of the middle son (1) and middle daughter (9) suggests the likelihood of many children. • Joyous events are likely in the presence of good external landforms corresponding to the 9,1 sector. <p>Negative:</p> <ul style="list-style-type: none"> • Eye and heart diseases are likely in the presence of bad external landforms corresponding to the 9,1 sector.
9	2	<p>Fire (9) produces Bad Earth (2)</p> <p>Negative:</p> <ul style="list-style-type: none"> • Female occupants are likely to become aggressively authoritative, and remain single against their wishes. • Female children may take on abnormally masculine characteristics. • Children may present physical abnormalities from birth, and suffer from impaired or slower cognitive development.
9	3	<p>Wood (3) produces Fire (9)</p> <p>Positive:</p> <ul style="list-style-type: none"> • Children tend to be intelligent and studious, and bring luck to the home. <p>Negative:</p> <ul style="list-style-type: none"> • Fire accidents are likely with the onset of yearly star 7. • Occupants of period 7 properties tend to exhibit ruthless and stingy behaviours.

Mountain Star	Water Star	Implications
9	4	<p>Wood (4) produces Fire (9)</p> <p>Positive:</p> <ul style="list-style-type: none"> Children are intelligent and prudent in managing their finances. <p>Negative:</p> <ul style="list-style-type: none"> Female occupants tend to be domineering and overbearing. Occupants tend to be stingy. Occupants may experience difficulties conceiving male children. Female occupants may lose money to love or sex scandals.
9	5	<p>Fire (9) produces Bad Earth (5)</p> <p>Negative:</p> <ul style="list-style-type: none"> Occupants have an increased likelihood of contracting venereal diseases, brought about by engaging in paid sexual services. Occupants are also more likely to require surgery. Certain stove positions could give rise to eye and heart diseases, and some cancers. With the arrival of star 7, occupants are more likely to abuse drugs, sometimes even committing drug-induced suicides.
9	6	<p>Fire (9) controls Metal (6)</p> <p>Negative:</p> <ul style="list-style-type: none"> Children, especially sons, may be disobedient. Fathers in the property could be autocratic, antagonistic and authoritative in the upbringing of their children. Children, especially the middle daughter (9) (referring to unmarried females above the age of 16), may be rebellious. The arrival of the yearly or monthly star 5 triggers epidemics such as outbreaks of mad cow disease, dengue fever, Ebola and cholera, which may bring death to occupants. Occupants face hectic work schedules involving frequent travel, and may physically cough up blood.

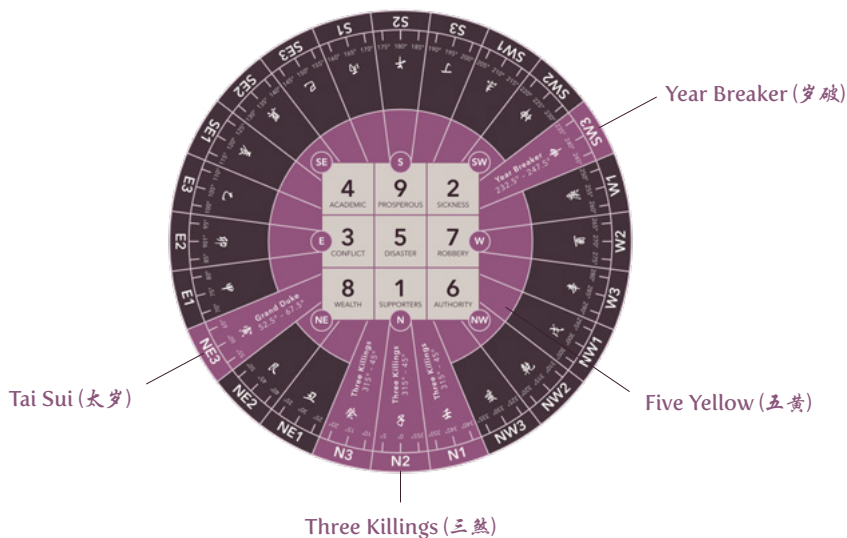
Mountain Star	Water Star	Implications
9	7	<p>Fire (9) controls Metal (7)</p> <p>Negative:</p> <ul style="list-style-type: none"> • Occupants face increased risk of fire accidents with the arrival of yearly stars 2 or 5, or monthly stars 3 or 4. • As Fire (9) counters Metal (7), conflicts and confrontations among female occupants are common. • The arrival of the yearly or monthly star 5 triggers epidemics such as outbreaks of mad cow disease, dengue fever, Ebola and cholera, which may bring death to occupants. • With the arrival of Poison (5), occupants are likely to contract venereal diseases from brothel visits.
9	8	<p>Fire (9) produces Earth (8)</p> <p>Positive:</p> <ul style="list-style-type: none"> • This sector brings its occupants engaging activities, auspicious occasions and joyous events. • When combined with yearly or monthly star 2, this sector ushers in great prosperity.
9	9	<p>Double Fire (9)</p> <p>Positive:</p> <ul style="list-style-type: none"> • Occupants are blessed with good wealth luck and many children. <p>Negative:</p> <ul style="list-style-type: none"> • Rocky hills facing this sector may lead to blindness in occupants

Annual Afflictions stemming from San Yuan Xuan Kong Flying Star

Every year, different afflictions or stars move to different sectors in each home or office. It is important to be aware of these annual afflictions as they can bring harm and misfortune to the occupants of a property.

It is particularly important to be aware of how the annual afflictions interact with major undertakings such as construction or renovation works, or any activities that generate lots of noise. Occupants can then consider various strategies to mitigate the potentially harmful and disruptive impacts brought about by these afflictions.

According to the study of Imperial Feng Shui, there are four types of annual afflictions:



I. Tai Sui (太岁)

Tai Sui (太岁) is also known as the Grand Duke Jupiter Tai Sui. Covering an area of 15 degrees, its position is signified by the earthly branch (Zodiac sign) of the year.

It is important to watch out for affliction with Tai Sui direction as offending it will bring worries, material losses and health issues to occupants.

2. Year Breaker (岁破)

The Year Breaker occupies the sector that is directly opposite Tai Sui. It brings about a loss of wealth, obstacles and illnesses.

3. Three Killings (三煞)

The three killings are associated with negative repercussions such as theft, loss of wealth and recurring health problems. It covers an area of 90 degrees.

The three killings consist of 3 types of Sha Qi: Robbery Sha (劫煞), Calamity Sha (灾煞) and Annual Sha (岁煞). The concept of Sha Qi is further discussed in Part 5.

4. Five Yellow (五黄)

Five Yellow (五黄) is known as the misfortune star. It causes severe illnesses, accidents, financial losses and relationship challenges. As the name suggests, this is one of the most inauspicious sectors or directions to avoid. It covers an area of 45 degrees.

Combating the Annual Afflictions

Despite appearing daunting, most effects brought about by the annual afflictions can be suppressed, or mitigated, using Imperial Feng Shui solutions.

One of the most effective methods of countering the negative effects of the annual afflictions involves installing the Imperial White Inkstone in the wealth sector of the property.

Such inkstones were traditionally used by Imperial Feng Shui masters of the Forbidden City to suppress Sha Qi and empower Chinese Emperors with authority. During the long and illustrious reign of Emperor Qian Long, these magnificent earthly treasures were the epitome of his appreciation of precious gems, as well as unwavering commitment to upholding the tenets of Imperial Feng Shui. More details about the Imperial White Inkstone, and its role in countering negative phenomena such as Sha Qi, can be found in Part 5 of this book.

To further reduce the impacts of the annual afflictions, an auspicious date and time should be selected for the commencement of any construction or renovation work.



Imperial White Inkstone

Shrimp Collection

PART 3

Sectors within a property

According to the tenets of Imperial Feng Shui, there are five important sectors present in each home or office. These must be activated to promote the flow of Qi within the property, and enhance the occupants' well-being and prosperity. Upon doing so, occupants will find themselves achieving well-rounded success and breakthroughs in business, career, sales, trading and investments.

The Five Important Sectors in every property

I. Direct Wealth Sector (正財位)

This sector governs the primary source of income of the occupants. For most of us, our primary source of income refers to income we derive from our careers, business pursuits and sales figures.

2. Indirect Wealth Sector (偏財位)

This sector governs the secondary source of income of the occupants. Our secondary source of income refers to income we derive from our investments, trading or sideline businesses. However, if you engage in such work on a full-time basis, these would be your primary sources of income.

3. Direct Benefactor Sector (明貴人位)

This sector governs the direct support occupants gain from the authorities, superiors, colleagues, subordinates and customers. Examples of such benefactors include a superior who helped you get promoted, or a customer who supported you by contributing to your sales revenue.

4. Indirect Benefactor Sector (暗貴人位)

This sector governs the behind-the-scenes support we gain from authorities, superiors, colleagues, subordinates and customers. Given the indirect nature of such support, we usually have a limited influence over the actions of these benefactors. One example of indirect benefactor support would be the approval of your proposal by the board of directors in your organisation.

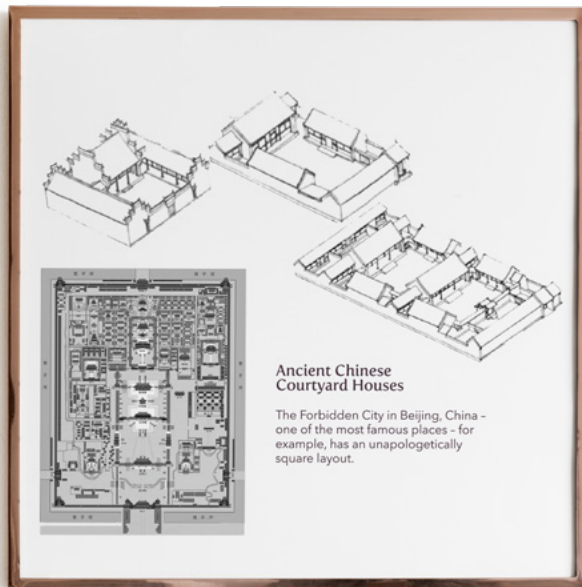
5. Power and Authority Sector (官祿位)

This sector governs the power, influence and authority we wield in various spheres of society.

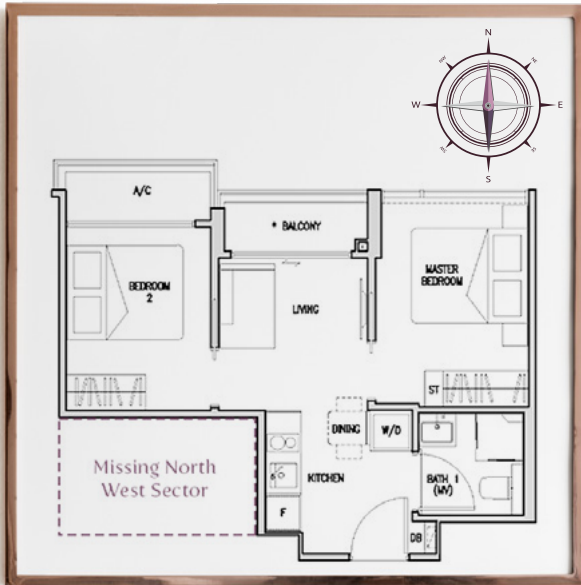
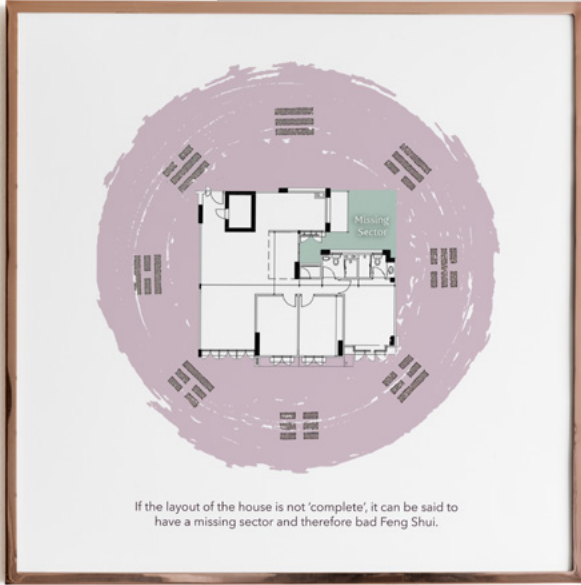
Missing Sectors


In ancient China, the presence of the five important sectors was typically ensured by constructing properties in “regular” shapes, most commonly squares or rectangles. The regularity of these homes promoted the flow of Qi within, thereby enhancing the wealth and luck of the occupants.

One prominent example of this square-shaped layout is the Forbidden City in Beijing, which boasts a conspicuously square footprint. Indeed, the optimal flow of Qi in the palace propelled generations of emperors and their families to dizzying heights of success for almost 500 years.



Due to the importance of these five sectors, properties should ideally be built to regular shapes to incorporate them and promote the flow of Qi within, just as the Forbidden City was. This facilitates the achievement of harmony and a balance of energy. Unfortunately, modern-day considerations, competing priorities and architectural techniques often gloss over the importance of such “regularity”, resulting in missing sectors and negatively affecting the occupants.




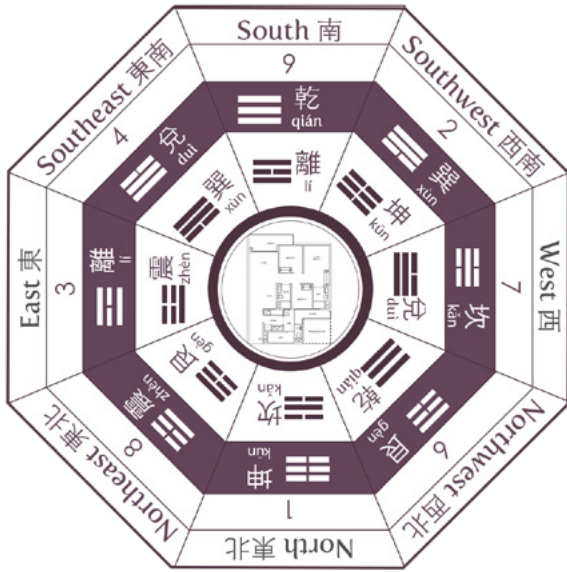


In Imperial Feng Shui, Ba Gua is a fundamental concept in which each compass direction or section of a property represents a unique aspect of life, such as family, health, wealth, career and even relationship luck.

Ba Gua determines if the interior of a room or a building is aligned with the natural energy of the space. If the property is in harmony with the natural energy, the occupants flourish in their pursuits, otherwise they may suffer some misfortunes and obstacles.

More specifically, the Early Heaven Ba Gua governs health while the Later Heaven Ba Gua governs wealth. Each missing sector represents a different occupant and brings about various implications for that occupant, for example in terms of their health and career.





Bagua	Members	Demographics
艮 Gen	Youngest Son	Below 16 years old
坎 Kan	Middle Son	Above 16 years old
震 Zhen	Eldest Son	Above 16 years old, married with no children
乾 Qian	Father	Single/Married/Divorced
兌 Dui	Youngest Daughter	Below 16 years old
離 Li	Middle Daughter	Above 16 years old
巽 Xun	Eldest Daughter	Above 16 years old, married with no children
坤 Kun	Mother	Single/Married/Divorced

Implications of Missing Sectors from both Early Heaven and Later Heaven Ba Gua perspectives

Missing Sector	Early Heaven (Health Risks)	Later Heaven (Wealth)
North	<p>Dui gua 兑卦 person's health would be affected.</p> <p>Dui gua refers to any female occupants below 16 years old</p> <p>Health issues: Kidney, Womb</p>	<p>Kun gua 坤卦 person's wealth would be affected if their income is derived from Earth related industries: real estate and insurance and construction.</p> <p>Kun gua refers to any female who has children.</p>
North East	<p>Qian gua 乾卦 person's health would be affected.</p> <p>Qian gua refers to any male occupants with children</p> <p>Health issues: Spine, nose</p>	<p>Zhen gua 震卦 person's wealth would be affected if their income is derived from human resource, coaching, sports, education or journalism.</p> <p>Zhen gua refers to married male without children</p>
North West	<p>Li gua 离卦 person's health would be affected.</p> <p>Li gua refers to any unmarried female occupants above the age of 16.</p> <p>Health issues: Brain, lungs</p>	<p>Gen gua 艮卦 person's wealth would be affected if their income is derived from real estate and insurance and construction</p> <p>Gen gua refers to any male occupants below the age of 16</p>
South	<p>Zhen gua 震卦 person's health would be affected.</p> <p>Zhen gua refers to married male without children</p> <p>Health issues: Eyes, heart</p>	<p>Qian gua 乾卦 person's wealth would be affected if their income is derived from Metal related industries: banking and finance, hardware and precious metals</p> <p>Qian gua refers to any male occupants with children</p>

Career and Business affected by the missing sector	Life Gua Number
Profession: Strategic thinking, planning and research Industries: Aquatic farm, transportation, shipping, logistics, restaurant and supermarket	1
Profession: Traditional Chinese Medicine, yoga, natural healing	8
Profession: Management consultant, policy maker, legal Industries: Banking, Hardware	6
Profession: fashion designer, motivational coach, photographer Industries: IT, Media, restaurants, electronics, beauty and spa	9

Missing Sector	Early Heaven (Health Risks)	Later Heaven (Wealth)
South East	<p>Kun gua 坤卦 person's health would be affected.</p> <p>Kun gua refers to any female who has children.</p> <p>Health issues: Hips, liver</p>	<p>Dui gua 兑卦 person's wealth would be affected.</p> <p>Dui gua refers to any female occupants below 16 years old)</p>
South West	<p>Kan gua 坎卦 person's health would be affected.</p> <p>Kan gua refers to any male occupant aged above 16 years old</p> <p>Health issues: Skin, stomach</p>	<p>Xun gua 巽卦 person's wealth would be affected if their income is derived from wood related industries such as education.</p> <p>Xun gua refers to married female without children</p>
East	<p>Gen gua 艮卦 person's health would be affected.</p> <p>Gen gua refers to any male occupants below the age of 16.</p> <p>Health issues: legs, gall bladder</p>	<p>Li (S) Li gua 离卦 person's wealth would be affected if their income is derived from fire related industries</p> <p>Li gua refers to any unmarried female occupants above the age of 16</p>
West	<p>Xun gua 巽卦 person's health would be affected.</p> <p>Xun gua refers to married female without children</p> <p>Health issues: Mouth, lungs</p>	<p>Kan gua 坎卦 person's wealth would be affected if their income is derived from water related industries like logistics, shipping and transportation.</p> <p>Kan gua refers to any male occupant aged above 16 years old</p>

Career and Business affected by the missing sector	Life Gua Number
Profession: Interior Designer, Artist, Project manager, florist, artists	4
Profession: Real estate agents, insurance agents, Industries: Real estate and construction, organic food, nutrition, ceramics, tiles	2
Profession: headhunter, recruiter, educator, sportsman Industries: Human resource, journalism	3
Profession: Celebrity, DJ, socialite, frontline sales Industries: Public relations, Telecommunications, Marketing Communications	7

How do we address the problem of Missing Sectors?

Solving the problem of missing sectors involves ensuring a balance of energy flow within the property. Master David remedies such properties by applying the principles of Imperial Feng Shui, along with the finest Imperial Harvest-grade earthly treasures, to restore the optimal balance of energy.

The Imperial White Inkstone is widely recognised as an effective way to counter the problems that arise from missing sectors. Let's take a closer look at how it creates a good flow of energy within your home.

Imperial White Inkstone

The Imperial White Inkstone has the powerful ability to promote the auspicious energy of one sector while countering three inauspicious sectors (一白遮三丑, 一旺挡三煞). At the same time, it empowers occupants with benefactors, power and authority.

In Part 5, we will examine more closely the properties of the Imperial White Inkstone, and how we can tap on its diverse attributes to also suppress Sha Qi and activate the authority sector in our homes and workplaces.



PART 4

The two types of Wealth Sectors and how to activate them

As highlighted in Part 3, two wealth sectors in every home or office must be activated in order for the occupants to reap the maximum wealth benefits available to them. When they are activated correctly with the expert guidance of an Imperial Feng Shui master, they can empower occupants with optimal Qi which translates to abundance and prosperity in all aspects of their lives.

Direct Wealth sector (正财位)

This sector governs the primary source of income of the occupants. For most of us, our primary source of income refers to income we derive from our careers, business pursuits and sales figures.

Indirect Wealth sector (偏财位):

This sector governs the secondary source of income of the occupants. Our secondary source of income refers to income we derive from our investments, trading or sideline businesses. However, if you engage in such work on a full-time basis, these would be your primary sources of income.

According to the study of Imperial Feng Shui, there are two groups of stars, namely mountain star and water star. Each star fulfils a specific set of roles in our lives. Indeed, one of the most important verses in the classics of Imperial Feng Shui states that "Mountains govern benefactors, authority and harmony, while Water governs wealth, opportunities and intuition." (山管人丁，水管财). From this verse, we can discern that the Water Star is the primary one that needs to be activated in the pursuit of abundance and prosperity.

Activating the Water Star (Wealth Star)

The water star is present in our living and working environments and plays a pivotal role in governing wealth, opportunities and intuition. Based on Imperial Feng Shui principles, Imperial Harvest-grade crystals are employed to activate the water star (wealth star) to usher in wealth and prosperity, as they play a vital role in adjusting and enhancing the Qi in your environment. Placing such crystals in the auspicious water star position will empower you and other occupants with opportunities and an abundance of wealth and prosperity.

With his profound eminence, Emperor Qian Long understood the importance of activating the water star, and advocated the use of Imperial Harvest-grade crystals to catalyse the proliferation of wealth and prosperity across China. As a result, the Qing dynasty was able to achieve robust economic development, consistent agricultural yield, social peace and stability.

Today, our blessed clients can activate the water star in their living or work spaces using the world's finest crystals - the same grade of crystals used by Emperor Qian Long and his team of Imperial Feng Shui masters. They can then find themselves ushering in the levels of economic success enjoyed by Emperor Qian Long and the Qing dynasty.

The Imperial Harvest Crystal Collection

The Imperial Harvest Crystal collection is a contemporary embodiment of the Imperial Feng Shui tradition that flourished in the Qing Dynasty, when Emperor Qian Long liberally installed internally-flawless and impeccably designed crystals to activate the auspicious water star in and around the imperial palace. The Imperial Harvest Crystal collection is specifically commissioned to empower our blessed clients to attain their financial goals and destinies, by activating the water star and ushering boundless wealth and prosperity into their homes and offices.

Three C's of Imperial Harvest-grade Crystals

The Imperial Harvest-grade Crystal collection is designed personally by Master David before they are carefully crafted by master craftsmen. To ensure the quality of each Imperial Harvest Crystal, Master David works directly with mine owners in Brazil to curate the finest raw crystals available.

The exquisite quality of Imperial Harvest Crystals, as embodied by their Three C's, is what elevates them above other crystals for our discerning blessed clients.

I. Clarity

As crystals are formed deep within the earth, under extreme heat and pressure, virtually all contain “birthmarks”, or small imperfections. The clarity of a crystal refers to the degree to which these imperfections are present. Depending on the size, location and darkness of these imperfections, they can interfere with light as it passes through the crystal. Imperial Harvest-grade crystals are invariably of impeccable clarity – they are of similar clarity as the crystals used to carve Emperor Qian Long’s extensive crystal collection 300 years ago.

Imperial Harvest’s Crystals are those that achieve only the most stringent gemological standards. In Imperial Feng Shui, the clarity of a crystal is directly correlated with the speed at which prosperity is achieved.



At Imperial Harvest, we take reference from the Gemological Institute of America's (GIA) grading system for diamonds, developed in the 1950s. In this system, each diamond bears a rating along a scale for clarity, ranging from diamonds with no visible imperfections when examined under 10x magnification, to those with imperfections clearly visible to the naked eye. The clarity, as well as value, of a diamond increases as the visibility of its imperfections decreases.

Just like diamonds, no crystal is perfectly devoid of imperfections. However, Imperial Harvest prescribes our blessed clients only crystals that would belong to the top echelons of GIA's diamond clarity scale, to ensure they swiftly reap the desired rewards. Here are the diamond clarity grades Imperial Harvest uses as benchmarks for our magnificent Crystal collection.



IF | Internally Flawless

No imperfections visible when magnified 10 times, tiny imperfections on the surface



VVS1 | Very very Slightly included

Tiny imperfections visible to a trained grader when magnified 10 times



VVS2 | Very very Slightly included

Imperfections are almost invisible to the naked eyes, and are slightly easier for a skilled grader to see under 10 times magnification

2. Colour

Imperial Harvest's Crystal collections consist of only the world's finest naturally-coloured crystals. This means they have never been artificially treated to remove, add or alter any colours.

Again referring to GIA's diamond grading framework, the colour of a diamond has important implications on its grade, desirability and price. The grading of diamonds according to colour is carried out by comparing them to masterstones, or diamonds of known colour, in controlled viewing environments specially designed to eliminate colour from surrounding surfaces as well as the light source itself. This allows for the colour of each diamond to be accurately measured with no environmental interference. Minor differences in colour detected in this environment are very difficult, if not impossible, to detect in a regular environment.

In the GIA colour grading system, diamonds range from completely colourless to bearing a light but clearly visible hue, along a D-Z continuous scale. D-graded diamonds are completely devoid of colour and extremely rare, while those with a Z grading have the most perceptible tinges of colour. These colour distinctions are very subtle and are often invisible to the untrained eye, but greatly impact the grading, quality and price of diamonds.

Imperial Harvest's Crystals similarly span a range of colours. Some are completely colourless, while others sport faint natural hues of brown, yellow or pink. Here is an introduction to some of the finest Imperial Harvest crystals that have yielded immense prosperity in the lives of our blessed clients.

Clear Quartz

Clear quartz is colourless and transparent, a result of the crystals growing with very little or no contact with their host rock. 99% of clear quartz in the market is tainted with impurities and hues of faint colours, having been treated with heat or gamma irradiation to induce colour.

Imperial Harvest only offers the top 1% of the world's natural clear quartz crystals.

Refractive index: 1.544 to 1.553
Specific gravity: 2.6 to 2.7
Mohs hardness: 7



Smoky Quartz

The smoky colour is a result of natural irradiation of silicon dioxide that creates the free silicon, giving it a natural smoky brown colour. Highly translucent smoky quartz is extremely rare, making up 0.5% of all smoky quartz in the market, while the remaining 99.5% is either opaque or partially translucent.

Imperial Harvest offers our blessed clients only highly translucent and IF to VVS2-graded smoky quartz.

Refractive index: 1.544 to 1.553

Specific gravity: 2.6 to 2.7

Mohs hardness: 7



Citrine

Citrine is one of the rarest crystals in the world. 97% of citrines available on the market are heat-treated amethysts or smoky quartz. Imperial Harvest offers only natural citrine that derives its brilliant fancy yellow colour from natural ferric minerals present in quartz.

Refractive index: 1.544 to 1.553
Specific gravity: 2.66 (+0.03/-0.02)
Mohs hardness: 7



Rose Quartz

Rose quartz is one of the most prized crystals in the world. It derives its pinkish hue from trace amounts of titanium, iron and manganese. Less than 5% of Imperial Harvest-grade crystals are rose quartz.

Refractive index: 1.544 to 1.553
Specific gravity: 2.66 (+0.03/-0.02)
Mohs hardness: 7



Rutilated Quartz

Rutilated quartz is a variety of quartz which contains natural acicular (needle-like) inclusions of rutile. These inclusions are usually gold-tinged, but may sometimes appear silver, copper red or deep black. Imperial Harvest offers only full rutilated quartz - the highest quality rutilated quartz available.

Refractive index: 1.544 to 1.553

Specific gravity: 2.63 - 2.7

Mohs hardness: 7



3. Craftmanship

While a raw crystal owes much of its beauty to nature, it is its manipulation in the hands of a master craftsman that allows it to truly shine as a work of art. Imperial Harvest honours the world's finest crystals with the most impeccable craftsmanship available. From conceptualisation to completion, each Imperial Harvest Crystal undergoes a year of designing and hand-carving before the finishing touches are applied by the most skillful artisans of our time.

Every Imperial Harvest crystal begins life in the voluminous annals of Master David's design sketchbook. After meticulous work to determine and finalise the sketches, they are sent to our state-of-the-art workshops, where our master craftsmen cut and carve according to Master David's enlightened vision.

This process is carried out entirely by hand, by a dedicated artisan, with skills acquired from generations of master artisans before him. This imbues each Imperial Harvest Crystal with impeccable detailed elements which no machine on Earth could ever replicate.

In accordance with Imperial Feng Shui principles, crystals fashioned into auspicious designs must be deftly created to maximise the amount of light reflected from the surface of the crystal. This allows the crystal to redirect earthly energies to its surroundings to the fullest extent, thereby channelling the greatest possible amount of auspicious energies to the occupants of the property.

At Imperial Harvest, our Crystals are lovingly hand-fashioned using a technique that accounts for the unique refraction index and reflective properties of the natural crystals we use. Indeed, Imperial Harvest Crystals are an exquisite embodiment of our steadfast dedication to applying authentic Imperial Feng Shui principles to the finest earthly treasures available to man.

Imperial Harvest Crystals: Laughing Buddha Series

The Buddha is a symbol of happiness as he enhances positive aspirations such as wealth, health, career and descendent luck. He is also almost always shown smiling or laughing, hence his nickname, the “Laughing Buddha” (笑佛).

Appearing throughout Chinese culture as a representation of both contentment and abundance, the Laughing Buddha brings good luck, contentment and abundance. A Laughing Buddha Crystal is a figurehead of auspicious luck and abundance which bestows a plenitude of wealth, happiness and satisfaction upon its destined owner. It also revitalises the intellect and reduces tension within the environment.

Having an Imperial Harvest-grade Laughing Buddha crystal placed in the workplace or residence activates the auspicious water star within the environment, ushering in an abundance of wealth and prosperity while eradicating inauspicious energies.

In this crystal series, Master David pairs five powerful symbols of prosperity alongside the Laughing Buddha.

Reference number: 6219
Gem: Unheated Clear Quartz
Colour: Colourless
Clarity: Internally Flawless



I. Gold Ingot

Inspiration

The treasure bag that the Laughing Buddha carries is known to contain countless gold ingots (金元宝), signifying a stream of never-ending wealth to those in the Laughing Buddha's favour.

Being a powerful manifestation of wealth luck, the Laughing Buddha is aptly paired with the wealth-garnering gold ingot that symbolises prosperity and prestige to create the ultimate prosperity Imperial Feng Shui treasure.

Benefits

The gold ingot is especially suitable for business owners and sales professionals as it safeguards your current fortune and enables your wealth to multiply exponentially as you make strategic decisions to achieve rapid sales and team growth.

For sales professionals, it empowers you with strategic benefactors to bestow you with quality leads and opportunities, and colossal pipelines with huge spending power. In particular, it helps you enjoy smooth-sailing sales transactions, thereby accelerating your portfolio and allowing you to achieve record-breaking sales.



Reference number: 5278
Gem: Clear Quartz
Colour: Colourless
Clarity: Internally Flawless

2. Ru Yi Scepter

Inspiration

The Ruyi, or “Scepter of Power”, is one of the most powerful emblems of leadership and respect. In ancient China, the Ruyi was used in the imperial courts by government officials and royalties as a symbol of power and authority.

Benefits

The Ruyi Scepter is beneficial for highly-driven and ambitious individuals who are in search of greater authority or career advancement. It also helps one find a clear path to success even in times of hardship and adversity.

For sales professionals, the Ruyi Scepter eliminates malefactors and challenges standing in your way to ensure the smooth execution of million-dollar transactions. Additionally, it empowers you with strategic benefactors to build a formidable sales team that will consistently hit KPIs and break company sales records.

The Ruyi Scepter also benefits career professionals, by presenting accelerated career advancement opportunities with extremely attractive compensation packages. This enables you to consistently grow your income and rise to the top echelons of the corporate ladder.



Reference number: 5310
Gem: Unheated Clear Quartz
Colour: Colourless
Clarity: Internally Flawless

3. Ling Zhi

Inspiration

For centuries, Ling Zhi (灵芝), known for its medicinal properties, has remained a key ingredient in traditional Chinese medicine. In the context of Imperial Feng Shui, it is a symbol of longevity and good health, and carries the connotation of rapid personal growth and success in your career and relationships.

Benefits

Due to its association with a long and successful life, placing the Ling Zhi in the auspicious water star sector of a home or workplace will empower its occupants with rapid personal growth. This is especially essential for those who are in roles that require regular public appearances.

The Laughing Buddha's Ling Zhi creates a very auspicious and unique Qi, which possesses the ability to greatly increase career luck by generating respect and earning recognition, thereby ensuring a smooth-sailing journey in all business ventures embarked upon. At the same time, the Ling Zhi empowers you to attain a life of spiritual and financial abundance while maintaining family harmony and bliss.



Reference number: 5276
Gem: Unheated Citrine
Colour: Fancy Yellow
Clarity: Internally Flawless

4. Treasure Bag

Inspiration

The figurative definition of the Laughing Buddha's Treasure Bag derives from the Laughing Buddha's name, which literally means "cloth sack". This refers to the bag that he is conventionally depicted with as he wanders along.

According to folklore, the Laughing Buddha had an open and big heart, and in time he came to be loved by many as he added the often missing lightheartedness, joy and laughter to everyday life.

Benefits

The Laughing Buddha is almost always depicted with his treasure bag that is filled with rare jewels, gold ingots and elixirs, making it a prominent symbol of perennial auspicious luck and prosperity. This evokes the notion of amassing a large fortune and achieving financial contentment in life.

In other words, the Laughing Buddha's Treasure Bag is the ultimate representation of abundance and prosperity, and the destined owner is blessed with a life of contentment.



Reference number: 5280
Gem: Unheated Citrine
Colour: Fancy Yellow
Clarity: Internally Flawless

5. Fortune Bat

Inspiration

In ancient China, having the emblem of a bat sewn into one's robes was a sign of power and high eminence. This made it highly coveted by emperors and high-ranking government officials. Part of the reason for this is that "bat" is written as 蝙蝠 in Chinese (pronounced as Bian Fu) and 蝠 sounds similar to the word 福 (pronounced as Fu), which means good fortune and happiness.

The bat's upside-down position when resting played a huge role in promulgating the Chinese custom of displaying the word 福 (good fortune and happiness) upside down. In Chinese, an upside-down display of the word 福 is read as 福倒 (Fu Dao), which sounds the same as 福到, meaning the arrival of happiness and blessings.

Benefits

The ancient Chinese believed that bats are symbols of good luck, wealth, success and prosperity, and are also able to ward off negative energies. Science has also proven that bats can navigate confidently through the dark to discover the resources they need to survive and form large colonies.

In the context of Imperial Feng Shui, the presence of the bat alongside the Laughing Buddha ushers in massive abundance and opens a channel to accumulate great wealth quickly.

The Laughing Buddha series of Imperial Harvest Crystals presents a vivid representation of the Laughing Buddha's everlasting charm, emanating contentment and happiness with its big belly and bright smile. When our blessed clients acquire a Laughing Buddha Crystal, they also acquire a lifetime of mirth and fulfilment.



Reference number: 5277
Gem: Unheated Citrine
Colour: Fancy Yellow
Clarity: Internally Flawless

Imperial Harvest Crystals: Mythical Creatures Series

The Imperial Harvest Mythical Creatures Crystal series draws inspiration from the mythology of legendary creatures in ancient China. In Chinese mythology, they are iconic symbols often associated with auspicious meanings such as good fortune, prosperity and wealth. Let's discuss some of the benefits of placing these Imperial Harvest-grade crystals in your home or workplace.

1. Dragon Turtle (龙龟)

The Dragon Turtle is one of the most auspicious mythological creatures in Chinese history. It weaves together the body of a turtle with the head of a dragon. This auspicious symbol was historically found widely in ancient Chinese palaces as a representation of peace, stability and longevity of the emperor. The dragon is one of the most powerful symbols in Imperial Feng Shui as it is associated with courage, auspiciousness, and good luck. On the other hand, the turtle, often associated with the wisdom of the earth, brings the spirit of stability, longevity, and protection.

Combining the attributes of both the dragon and the turtle, the mythical dragon turtle has the ability to grant everlasting wealth to its destined owner, and also acts as a representation of protection and authority.

Benefits

In Imperial Feng Shui, the dragon turtle is known to be a catalyst of stunning career and business luck, particularly in cutthroat or competitive industries.

This is due to the combination of the grounded, consistent energy of the turtle and the powerful, wealth-bringing ambition of the dragon. As a singular entity, the dragon turtle forms the ultimate symbol of continued stable success for generations to come, shielded from adversity and misfortune.

Reference number: 9988
Gem: Green Phantom
Colour: Green and Clear
Clarity: VVS2




2. Golden Toad (金蟾)

The three-legged wealth or money toad (金蟾), also known as Chan Chu (蟾蜍), is one of the most powerful enhancers of wealth luck. Legend has it that this mythical creature emerges every full moon, and brings with it an abundance of wealth and good fortune. This makes it one of the most prominent symbols of prosperity.

Benefits

The Golden Toad not only attracts new streams of wealth but also serves the purpose of protecting your current wealth and warding off bad luck. Installing the Imperial Harvest Golden Toad Crystal in your home or workplace ushers in a constant flow of income and golden opportunities.

In addition, the Golden Toad is also beneficial in enhancing descendant luck. It promises an excellent future for younger members of the household, and improves the vitality of seniors.



Reference number: 8353
Gem: Rutilated Quartz
Colour: Fancy Yellow
Clarity: VVS1

3. Pixiu (貔貅)

The Pixiu is a Chinese mythical auspicious creature with the ferocious-looking fusion of a dragon's head, a horse's body and unicorn claws. The winged animal's bold silhouette resembles that of a lion.

According to folklore, the Pixiu is fond of water, gold, silver and other precious jewels, and consumes wealth from all directions as sustenance. However, as it has no means of excreting these, the Pixiu heralds the acquiring and retention of wealth and treasures. The Pixiu is also the heavenly manifestation of good fortune.

In ancient China, Pixiu were commonly displayed in grand locations such as palaces and halls to ward off inauspicious Qi (阴气) and harness auspicious Qi.

Benefits

The Pixiu has the unique ability to draw wealth from all directions while preventing it from flowing out. In Imperial Feng Shui, the Pixiu is one of the strongest manifestations of raw auspicious luck, and installing it in the auspicious water star sector of your home or workplace can help you attract and accumulate wealth. It also has the power to protect you from calamity and dangers.

As the Pixiu possesses an insatiable appetite, it is a symbol of extremely good fortune and prosperity, helping its destined owner rapidly accumulate assets and resources from direct channels as well as unexpected windfalls.



Reference number: 8950
Gem: Smoky Quartz
Colour: Brown
Clarity: VVS1

4. Qilin (麒麟)

Legend has it that the Qilin acts as a guardian at the gates of heaven, preventing any evil elements from entering. In ancient China, the Qilin was highly favoured by the great emperors of China, to the extent that crystal Qilin seals and stamps were created for official use in the Imperial Court.

Today, the Qilin is installed in many large establishments such as hotels and casinos as a symbol of wealth security, both to elevate the status of the brand, as well as usher in an abundance of patrons.

Benefits

With the head of a dragon and the body of a horse, it is a unique combination of the best qualities of both these auspicious creatures. Some of the noble qualities it embodies include power, bravery, lofty aspirations and steely determination.

Due to the presence of its dragon's head, the Qilin releases 'sheng' Qi, which summons success, ambitions and wisdom. On the other hand, its horse's body makes it fiercely loyal to its destined owner. The scales on its back, resembling those of a carp, brings a plethora of wealth into its environment, alluding to the carp's symbolisation of abundance.

With these desirable traits, the Imperial Harvest Qilin Crystal is a powerful symbol of grandeur, wise administration and vigour, allowing its destined owner to sail smoothly through life and achieve financial stability and contentment.



Reference number: 3057
Gem: Clear Quartz
Colour: Colourless
Clarity: Internally Flawless

Imperial Harvest Crystals: Celestial Deities Series

Within the Imperial Harvest Crystal collection, the Celestial Deities series consists of the most prominent and powerful Crystals, as they represent omnipresent beings with immeasurable powers. Throughout history, devotees have been known to pray conscientiously and earnestly to these powerful deities, wishing for good luck and prosperity for themselves and their families. Today, the omnipotence of these deities is immortalised in Imperial Harvest's Celestial Deities Crystals.

Five Celestial Deities are brought to life in this series, with intricate details of their unique features carved carefully into the finest raw crystals sourced by Master David. These Imperial Harvest-grade Crystals yield potent Imperial Feng Shui properties, and are indeed everlasting earthly treasures to be cherished for generations to come.

Guan Yin

Guan Yin is the Bodhisattva of Compassion and Mercy who hears the sounds of the world and offers miraculous powers to assist all who pray to her. She also harnesses celestial powers to rescue those in perilous situations.

Inspiration

Guan Yin is an extremely popular Goddess among Buddhist followers as she is the ultimate symbol of mercy and passion. She embodies the essence of benevolence, and possesses a compassionate and giving nature.

Benefits

The empowering and inspiring Guan Yin grants intelligence and wisdom to those who ask for her benediction. Imperial Harvest's Guan Yin Crystal induces blissful and harmonious energies, thereby promoting harmony and reducing conflicts. It also enables its destined owner to lead a life of spiritual and financial abundance by opening new opportunities and channels to usher in prosperity and benefactors for assistance.

The Guan Yin Crystal also helps its destined owners conquer challenges and prevail over their competitors with ease. It also allows them to take command of leadership positions and vastly improve their communication and networking skills, which are essential to becoming successful entrepreneurs and sales professionals.

Reference number: 6120
Gem: Clear Quartz
Colour: Clear
Clarity: Internally Flawless



Goddess Tara

Known as the Mother of Liberation, Goddess Tara is an important figure in Buddhism, representing the virtues of success in work pursuits.

Inspiration

Tara's name literally means "star" or "planet", and she is associated with navigation along the journey to one's state of enlightenment.

Benefits

Goddess Tara embodies the healing energies of release from fear and ignorance, bringing awareness and relief from negativity.

As a nurturing Goddess, Tara brings tremendous power to overcome fear and anxiety while completely eradicating obstacles and problems in one's path. This allows the destined owner of this Crystal to scale the corporate ladder with ease and with the support of timely benefactors.

The Imperial Harvest Goddess Tara Crystal also brings swift success to destined owners, and fulfils their dreams and aspirations, bringing a lifetime of happiness as well as abundance and prosperity.



Reference number: 6118
Gem: Unheated Clear Quartz
Colour: Colourless
Clarity: Internally Flawless

Gautama Buddha

Gautama Buddha, or the Enlightened One, was a prince, warrior, spiritual leader, and teacher, whose life lays the entire foundation for Buddhism.

Inspiration

Gautama Buddha symbolises inner peace and prosperity. In Imperial Feng Shui, he is also one of the most powerful representations of auspiciousness, benefactor support, wisdom and enlightenment.

Benefits

Gautama Buddha's long ears are considered to be a symbol of wisdom and compassion. The destined owner of this Imperial Harvest-grade crystal will be empowered with accurate foresight and intuitions to make profitable million-dollar business decisions, as well as the ability to correctly predict market outcomes.

It also ushers calm energies into the environment, allowing occupants to make timely decisions at opportune moments to come out on top of any business endeavour.



Reference number: 6117
Gem: Unheated Clear Quartz
Colour: Colourless
Clarity: Internally Flawless

God of Wealth

The God of Wealth, also known as Cai Shen (财神), was one of the most popular gods in ancient China, and its popularity endures till today. Statues of the God of Wealth can be found on the premises of businesses run by Chinese merchants across the world. Numerous temples and shrines are also dedicated to the God of Wealth.

Inspiration

According to traditional Chinese beliefs, the God of Wealth is one of the most prominent symbols of prosperity, wealth and good fortune.

The God of Wealth has a unique responsibility in assisting followers in becoming wealthy, and is therefore much admired in Chinese society. Many rituals are held to invite him into homes to bring good fortune to its occupants. The God of Wealth brings with him the ability to expand windfalls and bring luck for the year ahead, as he blesses any life he touches with unimaginable good fortune.

Benefits

The God of Wealth is depicted holding an auspicious scroll with the Chinese words “招财进宝”, proclaiming the arrival of wealth. In his other hand is the Ruyi Scepter, a symbol of authority and respect that confers fabulous luck for those who covet power and leadership. It also represents a smooth-sailing life for its destined owner.

Imperial Harvest's God of Wealth Crystal ushers a torrent of auspicious luck into destined owners' homes and workplaces, bringing them good fortune and helping them secure a prosperous future and a rich and fulfilling life with a secure, high-paying and respectable job.



Reference number: 6121
Gem: Unheated Clear Quartz
Colour: Colourless
Clarity: Internally Flawless

Zhambala

Zhambala (or Jambhala) is the Tibetan Wealth God believed to be the manifestation of the Compassionate Buddha Chenrezig. This wealth-giving god extinguishes sufferings and obstacles caused by poverty and generates immense wealth luck. He is believed to help devotees attain not only material wealth but also wealth in virtue, wisdom, spiritual attainment and merits.

Inspiration

Zhambala is the protector from sickness and difficulties as well as the Bodhisattva of material and spiritual wealth, granting financial stability. In addition, Zhambala embodies the essence of generosity and is known to help the poor and those suffering from ill-fortune.

Imperial Harvest's Zhambala Crystal features a jewel-spouting mongoose on his left hand and a peach of immortality on his right.

The mongoose spews forth precious jewels that symbolise perpetual wealth as well as the chance to start afresh, while the peach of immortality bestows strategic acumen and signifies the everlasting good health of occupants within the environment.



Reference number: 6122
Gem: Unheated Smoky Quartz
Colour: Fancy Light Brown
Clarity: Internally Flawless

Benefits

"Zham" means "deity", "Ba" means "gold or wealth" and "La" means "to honour".

Collectively, the term "Zhambala" literally means "Precious Golden Deity", indicating one who gathers or brings the wealth of spirituality, material security as well as accomplishment into our lives.

Imperial Harvest's Zhambala Crystal invokes auspicious forces within destined owners' homes or workplaces, bringing abundance, prosperity and happiness, and ultimately transforming these spaces into an abode for Zhambala himself, allowing him to generate boundless everlasting luck for the occupants.

The extensive prowess of this powerful deity also eliminates obstacles in the way of destined owners' lives, thereby improving their fortunes and multiplying their income streams with unexpected windfalls. Job seekers also benefit from Zhambala's ability to speedily advance their job prospects.

The timeless beauty of Imperial Harvest Crystals

Every Imperial Harvest-grade Crystal is designed and crafted based on a fundamental belief in unlimited human potential, continuous improvement and lasting excellence.

Imperial Harvest Crystals are designed and crafted to last, and so is our commitment to prospering every generation.

Imperial Harvest Exquisite Jadeite Paintings



Background and origins

Throughout Chinese history, jade has been laboriously carved and polished into all manner of objects from jewellery to desk ornaments to even cups. They dutifully captured the ethos, ideologies, culture and the style of art of the particular period in which they were created. Such is their historical significance that they have often been used to study the geopolitical and societal progress of ancient China.

Nonetheless, jade began life quite differently. It was cherished as a talisman that bestowed long life and good luck on its owner, while serving as a way for people to build spiritual connections with their ancestors and deities. It was also prized for its durability, later emerging as a symbol of authority and status. In fact, it is widely regarded as the most precious stone in ancient China.

Above all, there was one category of jade that stood out during the Qing dynasty. Emperor Qian Long, the most unyielding advocate of Imperial Feng Shui of his time, was insistent on furnishing his palace with jadeite table screens. Today, surviving jadeite table screens from the Qing dynasty continue to fetch millions at international auction houses. In this section, we explore this special type of jade and delve into its history and heritage.

What are Jadeite Table Screens?

Jadeite table screens were associated with the wish to produce male heirs, and were also emblematic of a high rank in the military. Unlike jadeite mountains, which are dioramas of picturesque landscapes, jadeite table screens are not fully three-dimensional.

Instead, artisans fashion a flat base to varying levels of relief, allowing the jadeite table screens to manipulate the reflection of light and boast a sense of depth.

To execute this effect flawlessly, only the most translucent jadeite must be chosen. The result is a nuanced and masterful depiction of various textures such as rippling water, the scales on a dragon and the petals of a flower. As large pieces of such exquisite jadeite were not very accessible until the Qing dynasty, jadeite table screens were seldom created before the aforementioned period.



AN EXCEPTIONALLY RARE APPLE-GREEN JADEITE
"LANDSCAPE" TABLE SCREEN

Qing Dynasty, Qian Long Period
Sotheby's

Auctioned off at US \$1,076,000 (~\$1.45 million)

This makes jadeite table screens hugely representative of 18th century China. Emperor Qian Long commissioned a number of classical paintings from his own collection to be reproduced in jade, including the much-celebrated 'Travelling in the Mountains' by the eminent Guan Tong, who hailed from the early Song dynasty.

So fond was Emperor Qian Long of jadeite table screens that he even used them as vessels for the most important scholarly works of centuries past. The jadeite table screen above, in particular, incorporates the manuscript of Wang Xianzhi, a famous Chinese calligrapher from the Eastern Jin dynasty. The inscription is designed to imitate the swift and decisive brushwork of the original manuscript, and bears Emperor Qian Long's own poem and imperial seal.

Famous for his military conquests, Emperor Qian Long led his troops to occupy Eastern Turkestan (the modern-day Xinjiang region) from 1759 till his death in 1796. This gave him unprecedented access to a massive supply of raw jadeite needed to craft the jadeite table screens - the finest of which are often attributed to Emperor Qian Long's reign.



A HIGHLY IMPORTANT AND EXCEPTIONAL IMPERIAL GILT-INSCRIBED
"ZHONGQIU TIE" JADE SCREEN

*Yushi Mark and Period of Qian Long, Dated BingYin Year (In accordance with 1746)
Sotheby's*

Starting auction price of HK \$40 million (S\$68.7 million)

Activating the Wealth Star with Jadeite Table Screens

As highlighted earlier in Part 4, there are two main groups of stars in Imperial Feng Shui, namely mountain star and water star. As the water star governs wealth luck, it must be activated to bring about enduring wealth streams for occupants of the space.

There are traditionally two methods of activating the water star: using Imperial Harvest-grade crystals, discussed above, and using jadeite table screens.

Today, the surviving jadeite table screens from the Qing dynasty are prized by collectors not only for their historical significance, but also for their unparalleled craftsmanship and elegance. These treasures are usually buttressed by intricately carved supports - just as they stood on the desk of every government official within the Forbidden City.



Emperor Qian Long's team of Imperial Feng Shui masters had deployed these jadeite table screens to activate the auspicious wealth sector (water star) within the Forbidden City. These jadeite table screens were therefore deemed to be some of the most esteemed possessions within the officials' studios.

The activation of the water star empowered Emperor Qian Long and his team of trusted government officials to achieve robust economic growth, consistent agricultural yield, social peace and stability. As a capable and cultured ruler, Emperor Qian Long led the Qing Empire to its most splendid and prosperous era, boasting a large population and thriving economy during his long and distinguished reign.

Activation of the Water Star in the Modern-day Context

In today's context, activating the water star translates to empowering the occupants with wealth, opportunities and intuition to achieve financial success and breakthroughs. This was discussed earlier in Part 4.

Occupation type	Outcomes
Salaried career professionals	Consistent career progression, wide-spread recognition, multiple job offers with attractive pay increments
Sales/commission-based professionals	Consistent sales growth, significant increase in organic referrals, smooth conversion of leads
Business owners	Exponential business growth, generation of high revenues, million-dollar valuation of business
Investors	Confident expansion of portfolio, consistently high returns

Imperial Harvest reimagines the Qian Long Jadeite Table Screen

Due to their fragility, not many original Qian Long jadeite table screens have survived the passage of time. The inherent challenges involved in crafting such an intricate product further contributes to its scarcity.

Today, the hallowed Qian Long jadeite table screen is given a new lease of life as the world's first Exquisite Jadeite Painting, proudly conceptualised, crafted and presented by Imperial Harvest.

Each jadeite painting is housed in a sturdy gold-brushed frame crafted from Italian pine wood and nestled in hand-woven natural silk. The result is a modern and luxurious masterpiece that befits contemporary homes today, while still paying homage to one of the most monumental artefacts in Chinese history.

Installed in the wealth sector of your home or office, Imperial Harvest's Exquisite Jadeite Paintings take on the Imperial Feng Shui properties of jadeite table screens of the Qing dynasty, ushering explosive wealth and abundance into your living or working environment.

The Imperial Harvest's Exquisite Jadeite Painting is envisioned as a timeless, eternal and treasured family heirloom to be carefully safeguarded for generations to come.



Each painting starts with a flat base, which Imperial Harvest artisans fashion to varying levels of relief. This allows the painting to manipulate the reflection of light and boast a sense of depth. For a flawless execution of this effect, only the most translucent jadeite can be chosen as the canvas.

The result is a nuanced and masterful depiction of various textures such as the life-like scales of a dragon, the graceful petals of a flower and the rippling waves of a river. Many of these textures can be admired in the three collections of Imperial Harvest's Exquisite Jadeite Paintings.

Imperial Harvest's Exquisite Jadeite Paintings

The Celestial Deities Collection

The Celestial Deities jadeite paintings are the crown jewel in Imperial Harvest's lineup as they embody omnipresent beings with immeasurable powers. Throughout history, devotees and followers alike have prayed conscientiously and earnestly to these deities, wishing good luck and prosperity upon themselves and their families. Imperial Harvest has immortalised these omnipotent deities in our jadeite paintings, allowing blessed clients to reap the benefits of their auspicious energies.

Guan Gong is widely worshipped as the business God of Wealth, and commonly sought by those looking for a massive breakthrough in their business or career pursuits.

In this jadeite painting, Guan Gong is depicted riding on the Champion Stallion (千里马). Far from being an ordinary horse, the Champion Stallion hails from an exceptional pedigree of horse that can travel a thousand miles a day, enabling your business and sales to figuratively multiply by a thousand miles a day (一日千里).

Guan Gong is also equipped with the Green Dragon Sabre (青龙偃月刀). Weighing in at 42 kg, it is the heaviest weapon ever wielded by an army general in Chinese history. This is the same sabre responsible for helping Guan Gong cut through the five most robust city defences and kill the six most powerful generals of their time (过五关, 斩六将).

In the present-day, the sabre enables business and sales professionals to eliminate stiff competition, obstacles and challenges, and emerge victorious in every endeavour.

Check out the full collection:





Guan Gong on Champion Stallion

REF: 3356

Imperial Harvest's Exquisite Jadeite Paintings

The Mythical Creatures Collection

Imperial Harvest's Mythical Creatures jadeite paintings draw inspiration from the mythology of legendary creatures in ancient China. In Chinese mythology, these creatures are iconic symbols responsible for ushering in good fortune, prosperity and wealth. Their splendour is aptly showcased in Imperial Harvest's Exquisite Jadeite Paintings, where every feather and every scale is brought to life with a deft hand and remarkable attention to detail.

The Imperial Dragon has long been highly revered in China as the most auspicious emblem of wealth, power and authority. It is synonymous with Chinese emperors, who would invariably have motifs of the Imperial Dragon embossed on their robes, thrones and nearly every inch of the imperial palace. In the later years of the Qing Dynasty, the Imperial Dragon was even incorporated into the national flag.

The Imperial Dragon is said to emit a special form of Qi known as 'Sheng Qi' or 'Celestial Breath'. This essence of life is a magnet for good fortune, abundance and success. Furthermore, the Imperial Dragon's oversight of all five elements in Imperial Feng Shui - Earth, Fire, Wood, Metal and Water - blesses its destined owner with supreme luck.

Check out the full collection:





Imperial Dragon

REF: 3360

Imperial Harvest's Exquisite Jadeite Paintings The Landscapes Collection

In Chinese, landscapes are known as Shan Shui (山水), which literally translates to 'mountain and water'. The former teems with resources and wildlife, while the latter forms the arteries of the ecosystem. Seen as nature's most important features, they coexist harmoniously and provide balance to the environment. This concept is referenced in the Imperial Feng Shui principle that "Mountains govern benefactors, authority and harmony, while Water governs wealth" (山管人丁，水管财).

Beyond conveying this notion, the Landscapes jadeite paintings provide a window into the idyllic countryside of ancient China. Such striking sceneries, however, were highly unusual in the jadeite pieces of ancient China, as their innate complexity made them a challenging undertaking for even the most skilled artisans. Those who were blessed enough to own such a piece, such as Emperor Qian Long and his scholars, used the sceneries not just as an auspicious balance to life, but also as an escape from the toils of their daily routines.

Check out the full collection:





The Golden Age

REF: 3357

PART 5

The Authority sector and how to activate it

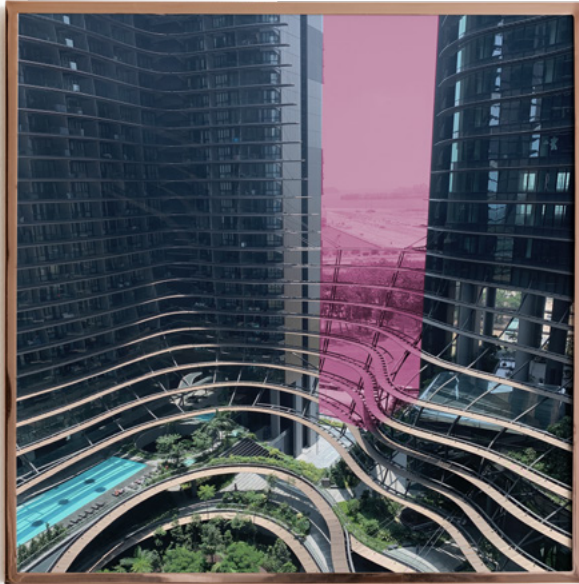
To better understand the authority sector in our homes and offices, as well as how to activate it effectively, it is first important to appreciate the seven important golden verses in the Imperial Feng Shui classics that govern the selection of homes. This brings us to the discussion of Sha Qi

What is Sha Qi (煞气)?

Inauspicious landform features create Sha Qi (煞气). Sha Qi refers to negative Feng Shui or attacking energy. Even though it is invisible, Sha Qi can often make one feel uncomfortable. In more serious cases, Sha Qi can affect your luck cycle and the prolonged exposure to this negative energy can be detrimental to your physical and mental well-being.

Have you entered a building or a house which made you feel uneasy for no apparent reason? This could be due to the presence of Sha Qi caused by bad design and construction. The following are seven golden verses that govern the selection of homes, along with the corresponding type of Sha Qi.

Golden verses that govern the selection of homes



I. Wind Gap Sha (天斩煞)

Golden verse: 天斩煞 - 宅若有天斩，利斧劈人丁

Wind Gap Sha or "cutting blade" is defined as the gap between two buildings.

As seen in the illustration, the flow of strong wind penetrates through the gap between the two buildings which will generate undesirable attacking energy to the facing units.

If any part of your house is facing this Sha Qi, it will affect the occupant in that particular room with health issues that may eventually lead to surgery.



2. Wall Knife Sha (壁刀煞)

Golden verse: 壁刀煞 - 围墙门柱冲大门，家中易有中风人

Wall Knife Sha, also known as "poison arrow", is defined as the sharp edge of the building or anything with a sharp edge pointing towards a main door, your body, or your home. Wall Knife Sha will result in many challenges in your life such as loss of wealth, lawsuit and even family disharmony.

According to principles of Emperor Landform, "墙头冲门，常被人论", which means: if the main door faces the "wall knife", it will cause conflicts and gossips at work or home. Family members will be prone to neck-related issues, car accidents or finance-related issues. If the back or side of the house has Wall Knife Sha, occupants may face issues from malefactors, extra-marital affairs and even financial troubles caused by their relatives.



3. T-Junction Sha (路冲煞)

Golden verse: 路冲煞 - 众路交冲，家无老翁

If your main door or building is facing a T-junction, this is known as T-Junction Sha. The implications on business owners are poor sales and difficult customers. Retail spaces that face the T-junction will have frequent changes of tenants due to business failures.

Homeowners living in a house that faces a T-junction often face having poor health, with the Feng Shui classics stating that it is rare to see elders living in such a home.

Residents that experience T-junction Sha are prone to eye-related diseases and traffic accidents. Those with children should avoid this as it is not ideal for your children's academics.



4. Curved Blade Sha (镰刀煞)

Golden verse: 镰刀煞 - 镰刀面向门，医生常上门

Curved Blade Sha refers to the shape of a road in front of a building that has a curve point towards it. The Curved Blade Sha is one of the most serious types of Sha Qi because it means the Qi is "deflected" from the building.

As such, when a building directly faces a Curved Blade Sha, occupants tend to suffer financial losses, abdominal health issues and accidents. In more serious cases, it may lead to surgery and major illnesses.



5. Suppression Sha (压迫煞)

Golden verse: 压迫煞 - 两高夹一低，破败招人欺

The golden verse, “两高夹一低，一世被人欺” states that if a shorter building is flanked by two taller buildings on the sides, the occupants will tend to experience more malefactors at work, decline of family fortunes and lack of motivation to succeed in life.

When it comes to the selection of the building, it is important to ensure that the residence or office building relative to two immediate buildings by the side are of equal heights.



6. White Tiger Sha (白虎煞)

Golden verse: 白虎煞 - 白虎起高峰，老婆骂老公

According to the golden verse, if a residential or office building has a taller building located on the right of it, the building is said to be afflicted with White Tiger Sha. Inversely, a taller building located on the left is defined as Green Dragon.

White Tiger Sha creates an over-dominant matriarchal situation within the household, resulting in experiences with family disharmony and an unequal family dynamic.



7. Flowing Water Sha (流水煞)

Golden verse: 流水煞 - 门槛河道直流出，一路贫穷百世哭

Imperial Feng Shui classics state that occupants will suffer financial losses if there's a river flowing underneath the house. This Feng Shui formation is also known as 水破天心 (water breaking the heavenly heart).

Water can be defined as physical or virtual water. Physical water refers to physiographic features like seas or lakes, whereas virtual water refers to roads.

In a modern context, when a residential or commercial building is positioned directly above a drive-way (virtual water), it is deemed to be afflicted with Flowing Water Sha. Flowing Water Sha creates financial problems, attracts malefactors, causes disharmony and indicates major health issues for the occupants.

Resolving the Sha Qi Problem

The Imperial Feng Shui solution to combating the issues posed by Sha Qi lies in the Imperial White Inkstone.

Imperial White Inkstone

The Imperial White Inkstone has the potent ability of “一白遮三丑，一旺挡三煞”。It can promote the auspicious energy of one sector while countering three inauspicious sectors. Imperial Harvest therefore prescribes the Imperial White Inkstone to not only counteract the ill effects of Sha Qi, but also activate the authority sector within homes and offices.

As we saw in Part 3, the Imperial White Inkstone is also used to address problems arising from missing sectors within homes and workplaces. Indeed, it is one of the most versatile and multifunctional tools in the array of Imperial Feng Shui treasures.

While inkstones mined from the famed Seven Star Crags in Zhaoqing City, Guangdong, come in a variety of colours, only 0.02% of them are white, making them the rarest type of inkstone available. The renowned exclusivity of white inkstones made them historically reserved for Chinese Emperors, with Imperial Feng Shui masters using them to empower the royals with ruling authority and legitimacy.





Imperial White Inkstones in the Imperial Court

Emperor Qian Long was an avid user of the Imperial White Inkstone, amassing an impressive collection which he used on a daily basis to grind his specially-concocted red vermilion, while reviewing daily state affairs at the Imperial Court. In Imperial Feng Shui, the meditative grinding of the red vermilion empowered Emperor Qian Long with intuition, benefactors and luck to make important state decisions.

One of the foremost proponents of Imperial Feng Shui, Emperor Qian Long commissioned and designed a variety of inkstones with ancient and classical styles with references from previous dynasties and inscriptions of his poetry. The production of imperial white inkstones was strictly overseen by government officials and handcrafted by top imperial artisans using materials of the highest quality. Free from impurities, the finest imperial white inkstones are famed for their luminous white-as-snow appearance. They also boast a jade-like texture that makes them smooth to the touch.

Emperor Qian Long's steadfast adherence to authentic Imperial Feng Shui principles fuelled the success of the Qing Dynasty, propelling it to a long and prosperous reign of 268 years.

The Authority Sector

The authority sector is the area within one's home or office that governs one's influence or leadership. When activated correctly with the Imperial White Inkstone, occupants find themselves empowered with influential leadership roles, with opportunities for their ideas and solutions to gain recognition and acceptance.

Imperial Harvest's Preservation of Emperor Qian Long's Inkstone Traditions

The complex motifs on each Imperial Harvest White Inkstone are sketched and designed by Master David, who works with only the most experienced engravers to etch his iconic handiwork on the precious stones. These artisans leverage specialised tools such as binocular microscopes to carve the most minute of details with care and precision, sometimes spending more than a month on each inkstone.

Polishing is then carried out to highlight each distinctive design component and accentuate the shape of each Imperial White Inkstone. This is always done by hand using the free-floating technique, which, while technically challenging, produces a smooth, blemish-free surface.

The result of these meticulous processes is a stunning Imperial White Inkstone that befits the Imperial Harvest brand. It also embodies the same heritage as the Imperial White Inkstones of Emperor Qian Long's Imperial Court 300 years ago, along with their unrivalled Imperial Feng Shui properties.

As discussed above, the Imperial White Inkstone is one of the most potent tools in the arsenal of earthly treasures to activate the authority star in the home or office. Imperial Harvest curates six impeccable collections of the Imperial White Inkstone to activate the authority star in your environment, while acting as a powerful foil to any negative Sha Qi that may be present.



The Royal Panda Collection

The panda is often depicted as leading a carefree life full of joy and inquisitiveness, and is also a symbol of abundance. The Royal Panda collection pairs the panda with bamboo, whose ladder-like steps represent endurance and steady progress towards success.

Employing pointillism techniques to project minuscule dots onto the stone's surface, it creates lifelike shadows that direct the eye towards the stark contrast between the lighter and darker shades of the masterpiece.

Endowed with the remarkable stylistic harmony of traditional Chinese ink wash painting techniques, the Royal Panda collection's complexity of artistic expression makes it truly comparable to the top echelons of classic paintings.



The Landscapes Collection

In Chinese, landscapes are known as 山水 (Shan Shui), which literally translates to “mountains and water”. These are two of the most important elements found in nature, and are thought to be harmoniously in equilibrium.

While landscape depictions are widely regarded as the pinnacle of Chinese paintings, many such paintings are not based on actual scenes. Instead, they were contrived of the unique imagination of the artist, indicative of the ethos behind landscape paintings of that period.

Master David's renditions of traditional landscape paintings are a testament to the nuanced depiction of the natural world, with a richness of detail garnered from a bird's eye perspective of landforms, flora and fauna. Broad calligraphic strokes are incorporated cohesively into the faithful mimetic representations of reality, creating stunning masterpieces brimming with technical finesse and mastery of Oriental art.



The Dragon Collection

Since ancient Chinese times, the dragon has been highly revered as the most auspicious emblem of wealth, power and authority. It is synonymous with Chinese Emperors, who would have motifs of the heavenly creature embossed on their robes, thrones and all across the imperial palace.

Representing power, authority and abundance, the Imperial Dragon is known to emit a special form of Qi, known as "Sheng Qi", which brings prosperity and an abundance of golden opportunities to those in its favour. The roiling waves symbolise surges of good fortune, strength and resilience to overcome any challenges in one's path.

In Imperial Feng Shui, the Imperial Dragon is one of the most important symbols of power, wealth and prosperity. The divine creature empowers individuals with the spirit of personal development, wisdom and foresight to overcome adversities and achieve greater breakthroughs.



The Crane Collection

In Chinese culture, the crane is revered as the prince of all feathered creatures, putting it on par with the legendary phoenix. In ancient China, high-ranking government officials wore robes embroidered with intricate motifs of the crane to convey their power and authority.

Cranes were also commonly depicted amidst culturally significant flora and fauna of their natural habitat. The lotus flower, for example, is a symbol of purity and enlightenment. In the artwork above, the lotus plant rising from the muddy waters and blooming in the presence of the crane's exquisite beauty is a metaphor for overcoming adversity and emerging triumphant from one's trials and tribulations.



The Shrimp Collection

Chinese shrimp paintings are almost synonymous with prolific Chinese artist Qi Baishi, whose works stay true to Chinese traditions while reflecting his visionary genius way ahead of his time.

From young, Qi Baishi developed a keen interest in shrimps, often capturing shrimps from a pond near his home and observing them for hours on end. These intent observations later gave rise to his iconic series of shrimp-based paintings that are today instantly recognisable by avid collectors familiar with his work.

Imperial Harvest's Shrimp Collection immortalises Qi Baishi's legacy in the finest Imperial White Inkstones, with the shrimp claws and antennae portrayed by wire-like strokes and fine, flowing lines. In this collection, the shrimps are seen fleeing their aquatic grass habitat in large numbers, in bold pursuit of a fresh environment.



Royal Emblem Collection

Consisting of the most auspicious mythical and legendary creatures in the Chinese pantheon, Imperial Harvest's Royal Emblem Collection features intricate ink-like strokes detailing three distinct pairings of auspicious creatures – each stylised into respectful, yet elaborate motifs.

Underscoring the flawlessness and intricacy that details the Royal Emblem Imperial White Inkstones are the two vermilion seals branded onto them: the Imperial Harvest seal and Master David's seal. Not only are these seals personal endorsements of originality and creativity by Master David, they also stand as hallmarks of Imperial Harvest's superlative craftsmanship. Embodying all that the brand stands for in its design and technical prowess, these seals exemplify a relentless pursuit of perfection.

As the Royal Emblem Imperial White Inkstone counters three types of negative energies - 口舌 (arguments), 官非 (lawsuits) and 小人 (malefactors), its pristine and unblemished whiteness and flawlessness produce a visually and functionally captivating profile.



The Qian Long Wishing Stone

A close cousin of the Imperial White Inkstone, the Qian Long Wishing Stone plays a starring role in ushering an abundance of benefactor support, wealth and health. While it bears the similar smooth jade-like texture and feel of the Imperial White Inkstone, the Qian Long Wishing Stone bears key distinguishing marks: distinct reddish-brown striations in its facade known as red vermilion lines (朱砂线) and shiny black striations known as black gold lines (乌金线).

The difference in form brings a difference in function – the Qian Long Wishing Stones are primarily employed in the activation of the annual flying stars. The Qian Long Wishing Stone activates the annual authority star at home or at work. Through the daily meditative grinding of the Imperial Harvest Vermilion Inksticks, destined owners take strides towards the fulfilment of their diverse wishes.



Qian Long Wishing Stone

REF: IWS 5883

PART 6

The Benefactor sector and how to activate it

As highlighted in Parts 1 and 2, mountains govern benefactors, authority and harmony while water governs wealth (山管人丁，水管财). This unshakeable tenet of Imperial Feng Shui dominates a variety of applications in our everyday lives.

The importance of the water star vis-a-vis our wealth has been discussed previously in Part 4. In this Part, we will take a closer look at the role mountains played in ancient Chinese life, and continue to play in our modern lives today.



Mountains and Chinese History

From as early as the Neolithic times, the Chinese have preferred to live in locations bounded by mountains and near water. Much of the archaeological evidence of primitive settlements in China points towards this tendency.

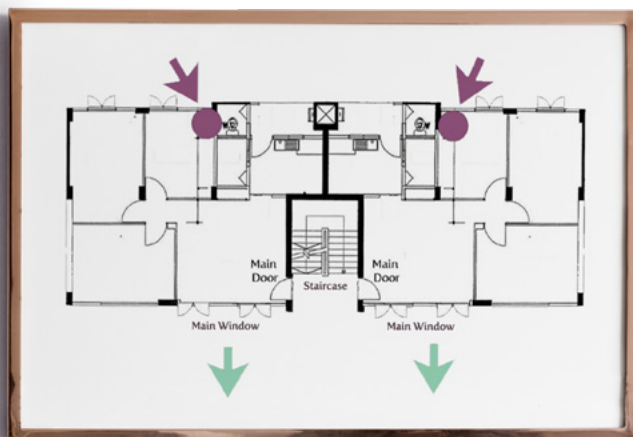
In many habitats, mountains form the backbone of the ecosystem, sheltering the flora and fauna from severe weather. Mountains also house a rich diversity of food and other resources in the form of water bodies, which also represent a means of transportation.



The Significance of Mountains in Imperial Feng Shui

In Chinese cosmology, the mountain is regarded as one of the most powerful symbols, regulating cosmic order and ensuring permanence. In recognition of the monumental role played by mountains, generations of Chinese emperors never failed to ensure mountain images were emblazoned across the wall behind their royal thrones, thereby mirroring their mandate and authority over the land.

Indeed, the mountain also symbolised the emperor's ability to rule with stability and steadfastness. It also empowered the emperor with benefactor support, authority and nobility, with this being achieved by activating the mountain star in the Imperial palace according to the hallowed tenets of Imperial Feng Shui.



Identifying and Activating the Mountain Star

As discussed earlier in Part 2, San Yuan Xuan Kong Flying Star is one of the key concepts used by Imperial Feng Shui masters to map the energy chart of a property. It allows them to identify the positions of the Sitting Star (Mountain Star) and the Facing Star (Water Star).

As water conjures images of a flowing medium, it is associated with a dynamic economy and finance. On the other hand, being static and stable, mountains represent power and support from benefactors. The power of the benefactor sector is therefore harnessed by activating the mountain, or sitting, star.

During the Qing dynasty, one fundamental issue encountered by Emperor Qian Long's team of Imperial Feng Shui masters in activating the mountain star was the fact that it was technically challenging to construct important imperial structures in the vicinity of mountains, as the land was often undulating and unstable.

Indeed, a similar obstacle is faced even today by us in modern Singapore, which is devoid of such landforms altogether.



Qian Long Jadeite Mountain

The Qian Long Jadeite Mountain was first conceived 300 years ago by Emperor Qian Long's Imperial Feng Shui masters as a visual representation of auspicious landforms such as metal elemental mountains. This was an ingenious solution to the inherent challenges associated with building a palace on such hilly terrain, allowing the royal family to reap the benefits of the respective elemental mountains.

Emperor Qian Long was a consummate jade connoisseur whose legendary profound appreciation of jade, jade products and its applications to Imperial Feng Shui was well-documented. This love for jade and Imperial Feng Shui partly spurred his conquest of Eastern Turkestan (the present-day Xinjiang region), which gave him unfettered access to a rich source of raw jade boulders.

With the drastically increased supply of raw jade, Emperor Qian Long commissioned a new genre of jadeite ornament known as the 'Jade Mountain' (玉山子), working with his team of Imperial Feng Shui masters to tap on this newfound source of large jadeite boulders. From the 1760s to the 1790s, Emperor Qian Long's imperial artisans collaborated with local craftsmen in southern China to produce a series of majestic jade mountains. Each of these jade mountains was based on an epic painting, either an ancient one from the imperial collection, or one of Qian Long's favourite works by a contemporary painter.



*A finely-carved Pale Celadon Jade Mountain
(Qian Long Period: 1736-1795)*

Due to the inherent irregularities present in each jade boulder, carving such intricate and immaculate designs was undoubtedly a tall order for even the most experienced imperial artisans.

Before the actual carving process, the imperial court painters created paper drafts of various angles and interpretations of each design. A series of models and prototypes were then made of wood, stone and wax, and presented to Emperor Qian Long for approval before being handed to the imperial artisans. The result is a series of jade mountains that showcase a dazzling array of intricate details envisioned and endorsed by Emperor Qian Long, bearing witness to the utmost attention to detail he and his master craftsmen are renowned for. The jade masterpieces also function as canvases on which a range of Emperor Qian Long's imperial inscriptions and seals can be found, resembling a picture colophon signature that endures across generations.



The best known of these are *Travelling in Autumn Mountains* (秋山行旅图); *The Great Yu Taming the River* (大禹治水图) and *Nine Elders of Huichang* (會昌九老图).



White Jade Mountain - Qing Dynasty, Qian Long Period

The heritage of Emperor Qian Long's Jadeite Mountains lives on at Imperial Harvest

Initially conceptualised as a practical means of harnessing the powers of auspicious elemental landforms, the Qian Long Jadeite Mountain has since transformed into an emblem of the pioneering innovation and craftsmanship showcased by Emperor Qian Long's team of master artisans.

Unlike other gemstones, jade production requires a laborious grinding process due to its exceptional hardness. Imperial Harvest's Qian Long Jadeite Mountain collection bears testament to the meticulous process undertaken 300 years ago by Emperor Qian Long's craftsmen, in which elegant and lifelike details were painstakingly relayed from paper outlines to jadeite sculptures. Today, our timeless reimagination of Qian Long's jadeite masterpieces adorn the homes and offices of numerous blessed clients, empowering them with amplified benefactor support, relationship harmony and success.

We will now take a closer look at the three auspicious elemental Qian Long Jadeite Mountains Master David has commissioned here at Imperial Harvest, as well as their role in activating the benefactor sector in our homes and workplaces.

Imperial Harvest presents the Three Auspicious Elemental Qian Long Jadeite Mountains

I. Metal Mountain

The metal mountain features a round top and is deemed as one of the most powerful wealth creation mountain features. It precedes a tremendous amount of wealth and benefactor support.



2. Earth Mountain

This refers to mountains with a flat top. The earth mountain empowers destined owners with strategic benefactors to help them rise to the top of the corporate ladder. These benefactors provide owners with advice and guidance for them to embark on the path of least resistance in their pursuit of financial and relationship success.

They usually appear at timely moments to help owners navigate challenges and obstacles, while also inspiring them with new business and investment ideas to accomplish breakthrough results in their ventures and investment returns.



3. Wood Mountain

Wood mountains are those with a conical top. They are known in Chinese as 贪狼星 (Greedy Wolf Star), and are ideal for raising children with high scholastic achievements.

The wood mountain provides strategic business and career inspirations, and also helps business owners be innovative and constantly on the lookout for golden opportunities. These qualities make the wood mountain the most powerful Imperial Feng Shui treasure for business owners.



Installation of the Imperial Harvest Qian Long Jadeite Mountain

The jadeite mountain is installed in the homes or offices of Imperial Harvest's blessed clients on a precisely selected auspicious date. This is determined based on a set of three calculations: San Yuan Qi Men Dun Jia, San Yuan Xuan Kong Sixty-Four Hexagram, and the Four Pillars of Destiny. The most appropriate location within the property is also guided by three calculations: San Yuan Xuan Kong Flying Star, San Yuan Xuan Kong Six Formula, and San Yuan Xuan Kong Sixty-Four Hexagrams.

These meticulous assessments underpin the utmost dedication Imperial Harvest affords our blessed clients. With the Qian Long Jadeite Mountain collection buttressed by four years of intensive conceptualization and crafting, our blessed clients can be assured of the same peerless Imperial Feng Shui treasures as those cherished by Emperor Qian Long himself.



PART 7

The Imperial Feng Shui Audit Process

There are three crucial steps in auditing the Feng Shui of each property:

Landform Assessment

Analysing and plotting the energy map of the property

**Mapping the Bazi chart of each occupant to the Landform Assessment and
San Yuan Xuan Kong Flying Star Chart**

A lengthy process, the Imperial Feng Shui Audit leaves no stone unturned - it fully equips our expert consultants with the necessary information to prescribe each esteemed Imperial Harvest client with the best Imperial Harvest treasures for their space.

Step I: Landform Assessment

Landforms govern how the macro energy in a particular environment influences the wealth, health, and relationships of the occupants. In an Imperial Feng Shui Audit, the assessment of landform comprises the following:

1. Measuring the height and shape of surrounding buildings relative to the property
2. Calibrating the direction of the property's surrounding roads
3. Measuring the velocity and volume of the traffic surrounding the property
4. Identifying the flat land dragon within the property by assessing its surrounding terrain and topography
5. Identifying the property's entrance and deciphering its Qi
6. Identifying the auspicious landform features of the property
7. Identifying the inauspicious landform features of the property
8. Assessing the volume, brightness and auspiciousness of the property's Red Phoenix (front of the house or shop)
9. Assessing the quality of support and auspiciousness of property's Green Dragon (left of the house or shop)
10. Assessing the quality of support and auspiciousness of the property's White Tiger (right of the house or shop)
11. Assessing the quality of support and auspiciousness of the property's Black Turtle (back of the house or shop)

Based on this comprehensive assessment of a property's landform, Imperial Harvest's consultants subsequently share with our blessed clients their property's Feng Shui characteristics.

Step 2: Analysing and plotting the energy map of the property

To accurately plot the energy map of a property, Imperial Harvest's consultants assess the facing direction of the building based on its design, building intention and internal layout. While many often assume that the main door of a property always points toward its facing direction, this is not always the case - it is precisely why bespoke measurements are crucial for each property.

The process of analysing and plotting the energy map of a property can be broken down into two different components:

I. Measuring the property's Facing Direction

The measurement process is carried out by placing the Luo Pan (罗盘 - an accurate Feng Shui compass) against the property's main door. By measuring the direction of the main door, the facing direction of a property can be accurately determined. According to Imperial Feng Shui principles, this is the only authentic method of deriving a property's facing direction - it is the only one which produces consistent measurements of facing direction.

While some Classical Feng Shui masters might argue that standing at the main door of a property causes negative magnetic influence, this is not true. Oftentimes, measurements taken at the centre of the house or a few steps away from the main door will produce inconsistent readings and measurements. This causes erroneous plotting of the Flying Star Chart - ultimately detrimental to the goal of improving a property's Feng Shui.

2. Determining the Period

Based on the year of completion of a property and the move-in date of its occupants, Imperial Harvest's consultants will determine its period. This step is integral to the Imperial Feng Shui Audit process - it ensures that the resulting San Yuan Xuan Kong Flying Star Chart is precise. After all, Imperial Feng Shui revolves around extremely accurate calculations.

Step 3: Mapping and Analysing the property's San Yuan Flying Star Chart

The final and most important step of the Imperial Feng Shui Audit is deciphering a property's unique San Yuan Xuan Kong Flying Star Chart - it reveals the invisible energies governing the property, which inevitably affects its occupants.

For residential properties, the following factors are critical to understanding a property's Feng Shui:

- The main door's energy influence with respect to the property's various rooms
- The energy of each individual room's door, and how it affects occupants
- The position of the property's stove and its influence on occupants' health
- The position of the study table and its influence on academic and/or work performance
- The position of the property's beds and how it influences occupants' wealth, health and relationships
- If there is one, the position of the property's altar table and its effect on the household's overall prosperity
- The landform features surrounding the property, analysed with respect to its San Yuan Xuan Kong Flying Star

Cohesively, these three meticulous steps in the Imperial Feng Shui Audit are able to uncover powerful insights about your property. They allow our consultants to make enlightened prescriptions of Imperial Harvest home treasures to be installed, to unlock occupants' success in all areas, whether in academic, career, sales, investment or business ventures.

Master David performing Audits at Blessed Clients' Homes and Workplaces



Over the years, Master David has been invited to the homes and workplaces of many blessed clients to perform in-depth audits of their properties. For each client, Master David undertakes the same meticulous three-step process outlined above.

One of Imperial Harvest's notable clients is Italian boutique jeweller Damiani, whose appointment of Master David as its Principal Feng Shui Consultant made waves due to the novelty of the Italian luxury jeweller incorporating Feng Shui principles into its business operations.

As part of the comprehensive consultation process, Master David undertook an in-depth audit of the boutique premises at Ngee Ann City. As with home audits, Master David employed essential tools such as the Luo Pan to execute precise directional measurements of key areas of the premises, such as the main door of both the mall and the shopfront.



Master David also explained the Feng Shui significance of internal landforms within the boutique and plotted the Flying Star chart to provide a forecast of the monthly sales performance for each sales counter.

He also discussed with the Damiani management team a series of key steps and remedies as part of a holistic action plan to refine the Feng Shui properties of the premises. With that, a new era of unprecedented bounteous success at Damiani was born.



Master David's appointment as Principal Feng Shui Consultant at IWC Schaffhausen was no less momentous. In this role, Master David was intimately involved in the layout and setup of IWC Schaffhausen's two boutiques, from renovation, date selection for re-opening and installation of specially-curated Imperial Harvest treasures.

Apart from the audit services rendered to Damiani, Imperial Harvest's comprehensive suite of Imperial Feng Shui services includes the selection and recommendation of earthly treasures that are appropriate for each client.

Following extensive discussions with the IWC Schaffhausen management team, Master David proceeded to install selected Imperial Harvest Crystals at the appropriate sectors of the two boutiques, to activate the water star and generate plentiful leads, opportunities and sales.



Just as at Damiani and IWC Schaffhausen, Master David will undertake an in-depth Feng Shui analysis of your home during your home audit session. The same tools, techniques and treasures will be employed to ensure that you not only reap the benefits of an optimal home layout, but also the rewards invoked by the activation of key sectors within your home.

PART 8

The Imperial Harvest Experience

Imperial Harvest is proud to have partnered many of our blessed clients on their life journeys across multiple domains, including aspects of their relationships, career and personal development. Our clients invariably emerge from our elegant galleries with a renewed sense of purpose and fulfilment.



Jeff Yeo
Entrepreneur



Visit <https://www.imperialharvest.com/imperial-harvest-stories> or scan here to find out more

“ After refining the Feng Shui in my home and activating the mountain star, my wife’s career switch led to her becoming much happier, and finding more fulfilment in her work - Jeff ”



Jun Yih & Serene
E-commerce Entrepreneurs



Visit <https://www.imperialharvest.com/imperial-harvest-stories> or scan here to find out more

“ Since installing the Qian Long Imperial White Inkstone to suppress Sha Qi in my home, I have enjoyed tremendous improvement in my relationship with my children. - Serene ”



Our clients come from all walks of life, and each of them has their unique set of circumstances, frustrations and aspirations. At Imperial Harvest, we understand the importance of bespoke Imperial Feng Shui solutions and enhancements for each of our blessed clients.

Each journey with Imperial Harvest begins with a comprehensive consultation at our elegant galleries with a dedicated consultant who will journey with you through the entire spectrum of your Imperial Feng Shui needs. You can be assured of only the finest and most effective remedies, backed by three generations of Imperial Feng Shui expertise.

Having undergone Master David's visionary tutelage, our consultants are well-versed in the art of Imperial Feng Shui. Over the course of their experience with Imperial Harvest, they have encountered and resolved a comprehensive gamut of personal and professional roadblocks in the lives of our blessed clients.



Jowel Ho
Master Consultant

With a robust grasp of Imperial Feng Shui principles and treasures, and an unwavering commitment to your holistic wellbeing, you can be assured that Imperial Harvest stands ready as the Imperial Feng Shui platform you need to propel your life to unprecedented heights.

Our expert consultants are always on hand to help you attain your goals and fulfil your destiny. Book a complimentary appointment or contact us at +65 91221826 (WhatsApp/SMS/Call).



Erika Liu
Gallery Manager

APPENDIX:

Summary of Sectors within the Home/Office

Sector in Home/Office	Sphere of life it governs	Earthly treasure to activate
Wealth (Direct/Indirect)	Primary/Secondary source(s) of income	Imperial Harvest-grade Crystals Exquisite Jadeite Paintings
Authority	Power, influence and authority wielded in society	Imperial White Inkstone
Benefactor (Direct/Indirect)	Direct/Behind-the-scenes (uncontrollable) support from authorities, superiors, colleagues, subordinates, customers	Qian Long Jadeite Mountain
Annual Flying Stars	Primary/Secondary source(s) of income, power, support from benefactors and authority wielded in society	Qian Long Wishing Stone

Imperial Harvest:

402 Orchard Road, #02-07/08
Delfi Orchard
Singapore 238876

Imperial Harvest Prestige:

402 Orchard Road, #03-24/25
Delfi Orchard
Singapore 238876

Opening Hours

Mon - Fri : 12pm - 8pm
Sat : 10am - 6pm
Sun : Closed

Contact Us

+65 9122 1826 (Whatsapp/SMS/Call)
prosper@imperialharvest.com